



ORCHID
IVY

Sector 51, Gurugram

Discover a new
way of living



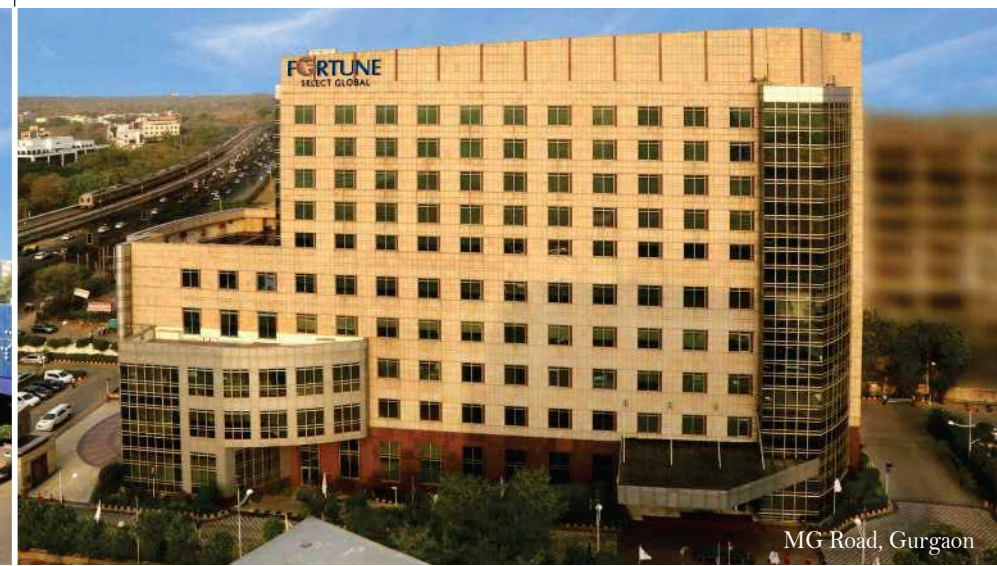


Inspiration of *Life*

Charismatic, captivating and easily distinguishable - the orchid flower is like none other. It is a representation of love & trust. And these are the qualities that we seek to embed at Orchid.

Established four decades ago, Orchid Infrastructures Developers pvt. Ltd. Was built by a young entrepreneur who decided to juggernaut concrete masterpieces along with the family's 200 years old established jewelry business of antiquity and repute, thereby exploring the booming real estate Indic industry. He built an edifice grounded on strong intrinsic values & moral ethics that have been the abiding leitmotif for all years to come.

Unique architectural forms, enchanting exteriors and warm interiors gilded with state-of-the-art furnishing help set each Orchid creation apart.



Landmark Projects Delivered
in Prime Locations



Numerous Happy
Families & Clients



Innovative Designs &
Modern Facilities



Promise of Quality &
On-Time Delivery



Customer Centric
Approach



Stringent Safety
Practices

TRUSTWORTHY & DEPENDABLE

ACKNOWLEDGED REAL ESTATE DEVELOPER

Experience a Unique Lifestyle in the *Heart of Gurugram*

Reshaping Living Standards & Lifestyles

If you have dreamt of a home surrounded by greenery, giving you all the modern-day luxuries and the feeling of bond with the community, **Orchid IVY** is the home of your dreams.

Building a Strong Sense of Community

We understand that our consumers are not average citizens - they challenge the status quo, they are seekers of high quality and luxury, and at the same time they appreciate the sense of homeliness and community, giving you complete privacy with individual floors allocated only for you.

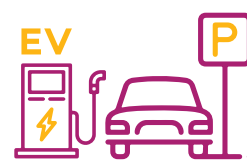
Orchid IVY is built to keep this new-age thinking in mind, it is built keeping you in mind.



Biometric
Controlled Access



1 Elevator For
4 Homes



2 Car Parkings
per Home



Dedicated Staff &
Utility Rooms



3 BHK + Study &
4 BHK + Study



Air Conditioned
Homes



Modular Kitchen
with Utility Area



Eco-Friendly &
Sustainable



Project *Highlights*

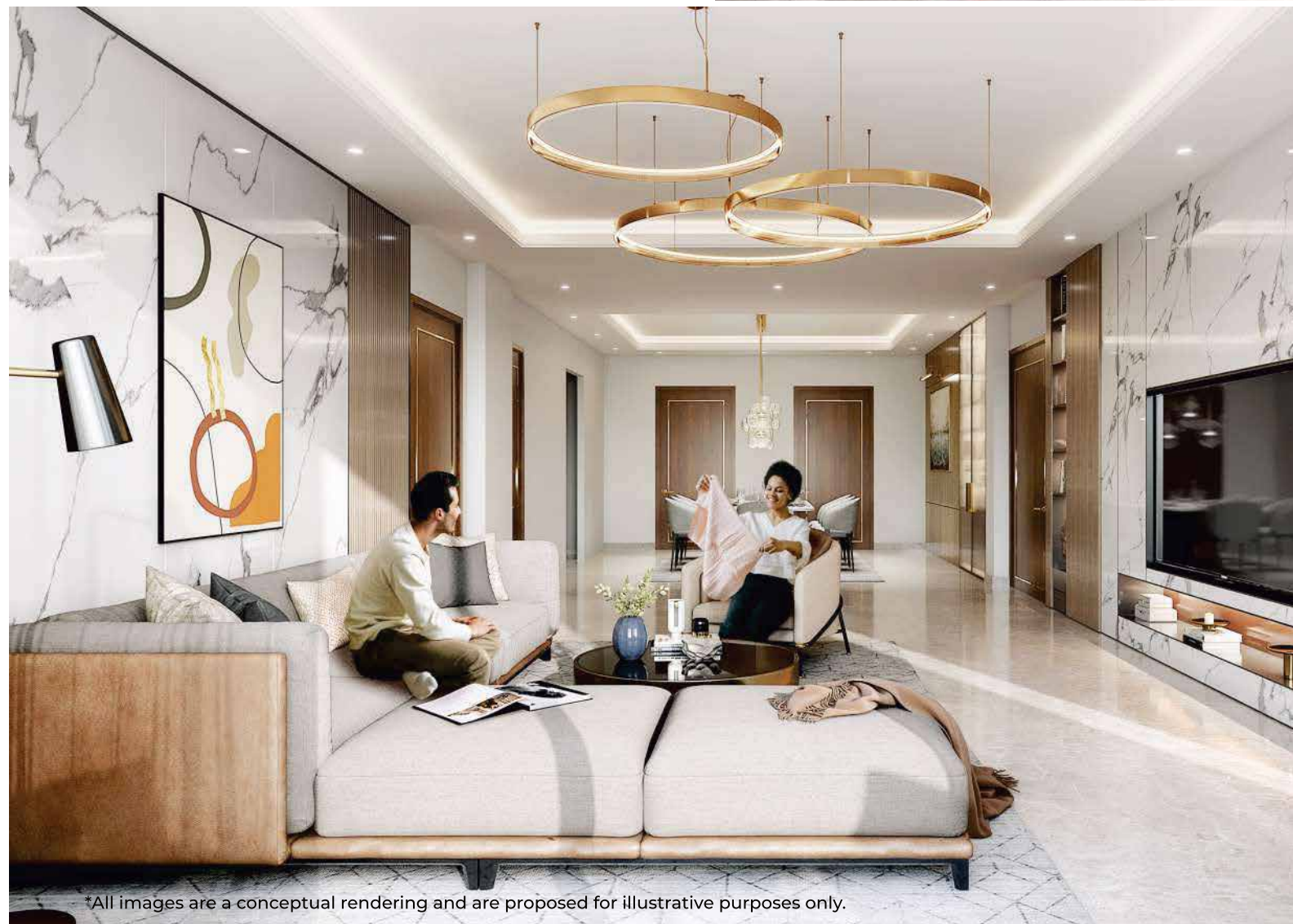
- Community of Low-rise Apartments
- Zero circulation wastage with 100% space efficiency
- Additional common areas in basement, stilt & terrace
- 24x7 Power Supply & Backup
- 24x7 Water Supply
- Biometric Entries, Controlled Access to each block
- Elegant and Dynamic Facade
- Exceptional Lighting System
- Enveloped in greenery with boundary fences covered with natural plants
- Granite Cobblestone Pathways

Discover the joy of a *perfect home* with perfect surroundings

Orchid IVY, is a one-of-its-kind residential project that offers a unique per-floor pricing model for high-end living spaces that provide an unparalleled community experience. Surrounded by outstanding amenities, the houses are built keeping the aspiring & ambitious youth of India in mind. The architecture of this project is classy and elegant. Homes are designed with all the modern facilities and amenities which make your life as comfortable as you have dreamt of.



*All images are a conceptual rendering and are proposed for illustrative purposes only.



*All images are a conceptual rendering and are proposed for illustrative purposes only.



This beautiful residential housing project provides ample open space and a healthy environment. Greener spaces often emphasize just one aspect of “healthier living”. Through our key design elements we intend to touch upon the contrasting factors of building an aspirational community. **Orchid IVY** will be that perfect balance between nature and culture, a lifestyle coveted by urban citizens.

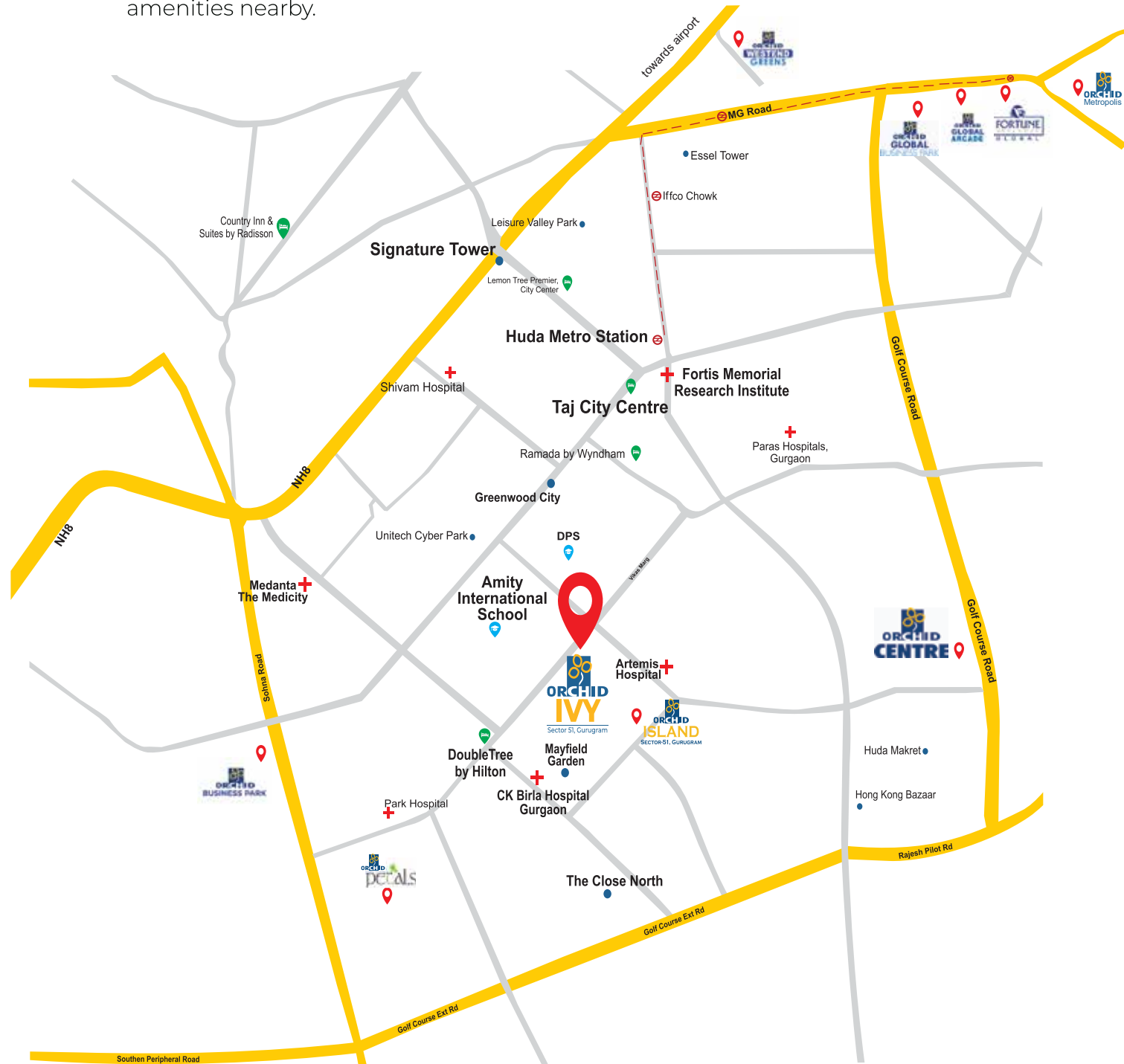
Built with all specifications of creating an inspiring and luxurious community you can enjoy an upscale lifestyle in a modern setting that is in perfect harmony with nature. We promote resource-efficient savings, providing the residents with a green and clean environment. While the artistic landscaping preserve life at its pristine best; **the best of world-class amenities and security services redefine the ultimate in luxurious and comfortable living.**

Connect with your dream.

Connect with Orchid IVY

Situated in a well connected, well inhabited and well developed surrounding, **Orchid IVY** is the latest and one of the most promising residential offering of Orchid Infrastructure Developers Pvt. Ltd. It is an emerging hotspot with all the facilities and amenities nearby.

The sector is highly sought after due to its easy connectivity to all the major routes of Gurugram. At **Orchid IVY**, You have the best schools for your children nearby, the best hospitals in close proximity and the best community around.



More than **17 Hospitals** close by including -

- CK Birla Hospital for Women (5 mins)
- Artemis Hospital (5 mins)
- Fortis Memorial Research Inst. (5 mins)
- Medanta - The Medicity (10 mins)



More than **50 Schools** close by including -

- Amity International School (2 mins)
- Heritage Xperiential Learning School (15 mins)
- DPS Intl. Edge School (15 mins)



More than **30 of the Best Shopping Malls**, including -

- WorldMark 2 (5 mins)
- MGF Metropolitan Mall (15 mins)
- Ambience Mall (25 mins)
- IKEA (coming soon)



More than **80 Eateries & Bars**, including the Cyber Hub at 20 mins



More than **10 of India's Leading Banks** within 5 mins reach

About The Neighbourhood

At **Orchid IVY**, you will be privy to all these amenities in your neighbourhood.

- Centrally Located in the Heart of Gurugram - Sector-51, a highly rated neighbourhood
- Located in close proximity to Amity International School
- Easily Accessible from Golf Course & Golf Course Extn. Road
- Close to Udhog Vihar and DLF Cyber City
- Nearest Metro stations - Huda City Center (6 km) and Sikandarpur (7 km)
- Gurugram Railway Station (13 km)
- Indira Gandhi International Airport (19 km)

Orchid Projects

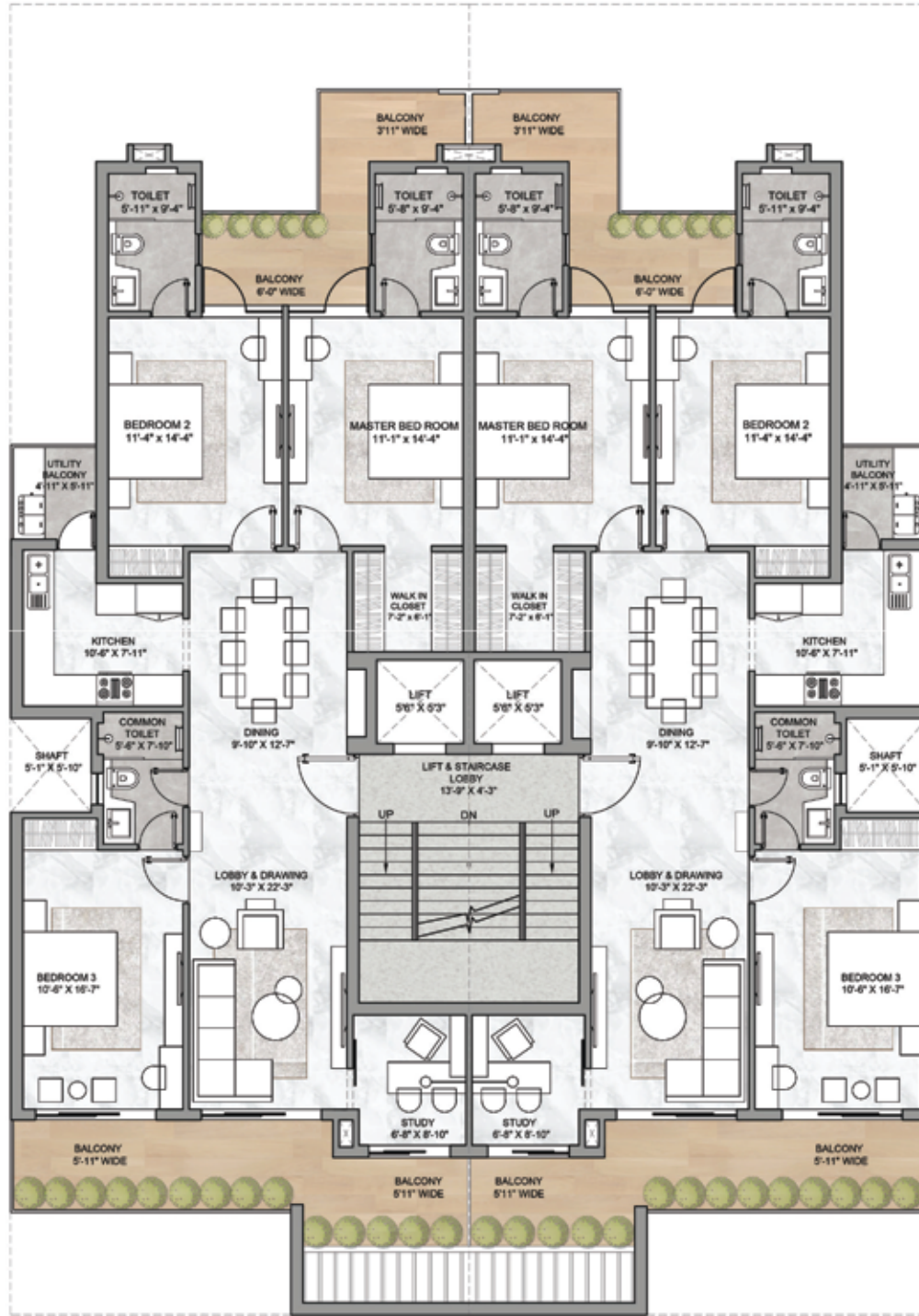
- Orchid Business Park
- Orchid Global Arcade
- Orchid Global Business Park
- Orchid Centre
- Orchid Petals
- Orchid Westend Greens
- Orchid Metropolis
- Orchid Island

Scan the QR code to know more about our location, nearby landmarks, amenities & places of interest.



SCAN ME

Unique Layouts for your Dream Home

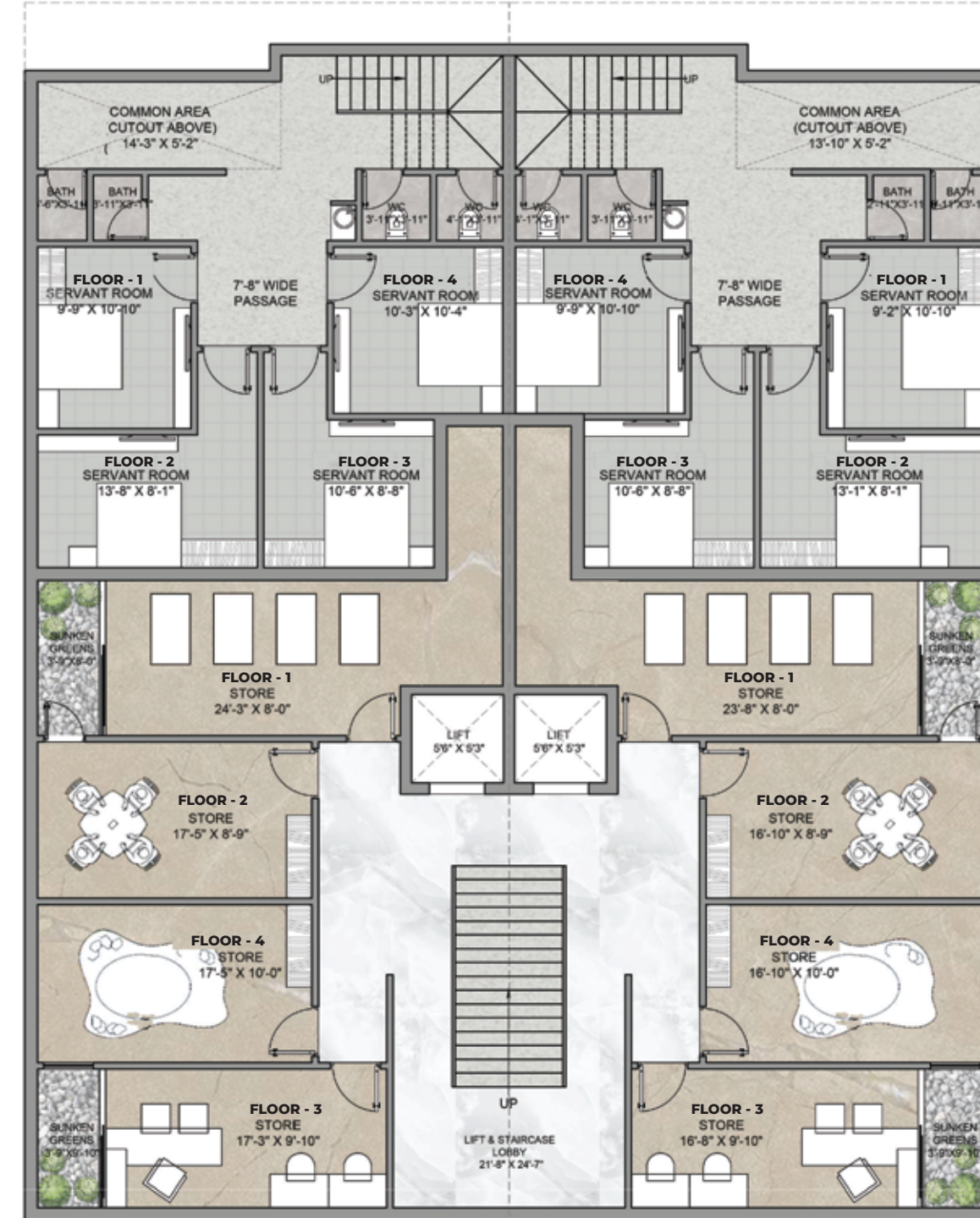


3+Study BHK Apartment on Plot Size - 260 sq yards(approx)
Additional allocated common area in basement and terrace

With the aim of building a strong foundation for tomorrow, **Orchid IVY** focuses on every little detail. From master planned structural designs to exceptional personal floor homes, we use a customer-centric approach to develop residences of

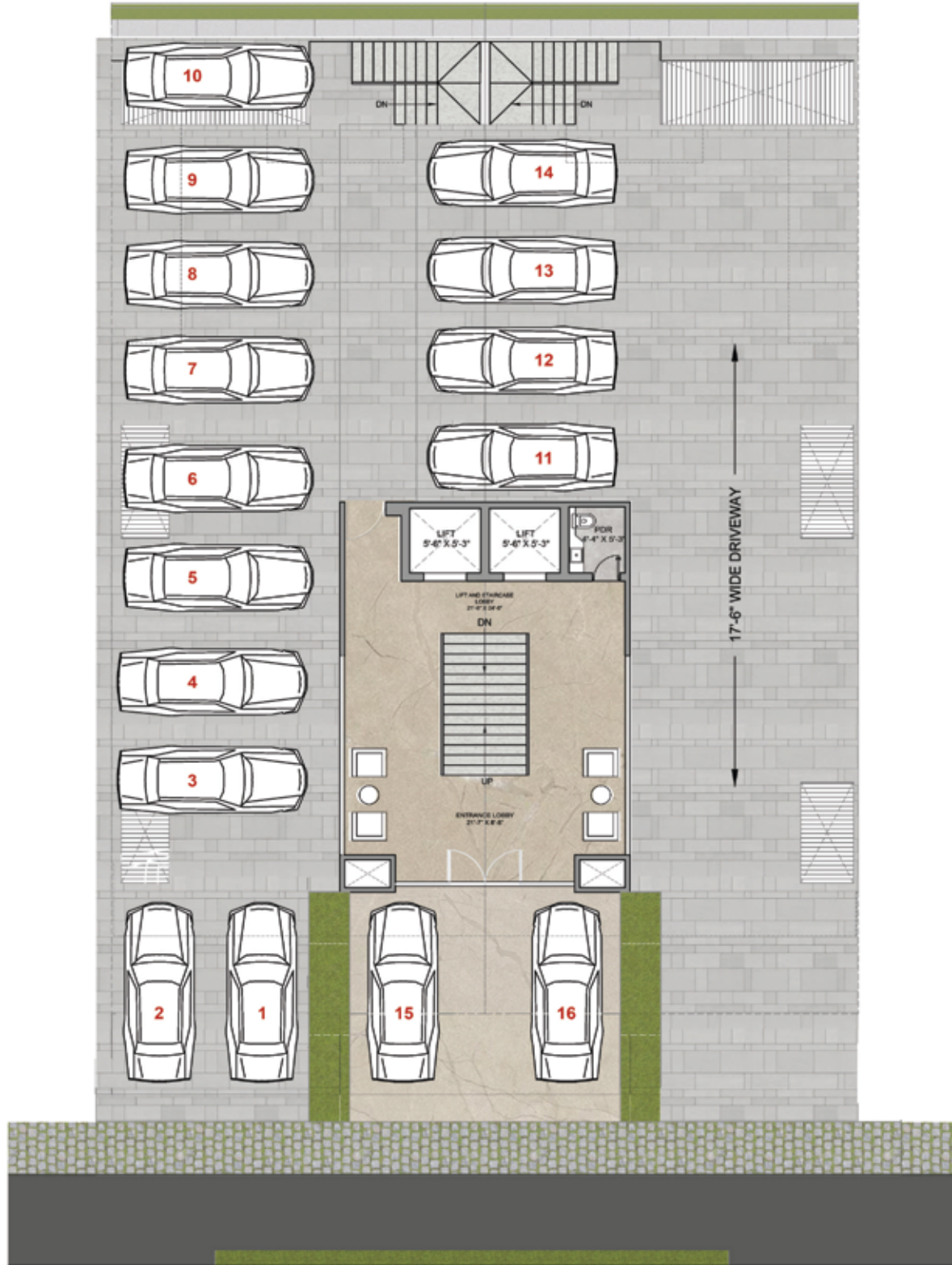
the highest standard. We believe that home is one place where you can be YOU. Keeping this in mind, **Orchid IVY** is a comfortable and luxurious cocoon nestled away from the pollution and humdrum of the city, yet well-connected with it.

*All images and area calculations are a conceptual rendering and are proposed for illustrative purposes only.



Basement
3+Study BHK Apartment

*All images and area calculations are a conceptual rendering and are proposed for illustrative purposes only.



Ground floor parking
3+Study BHK Apartment



Terrace Garden
3+Study BHK Apartment

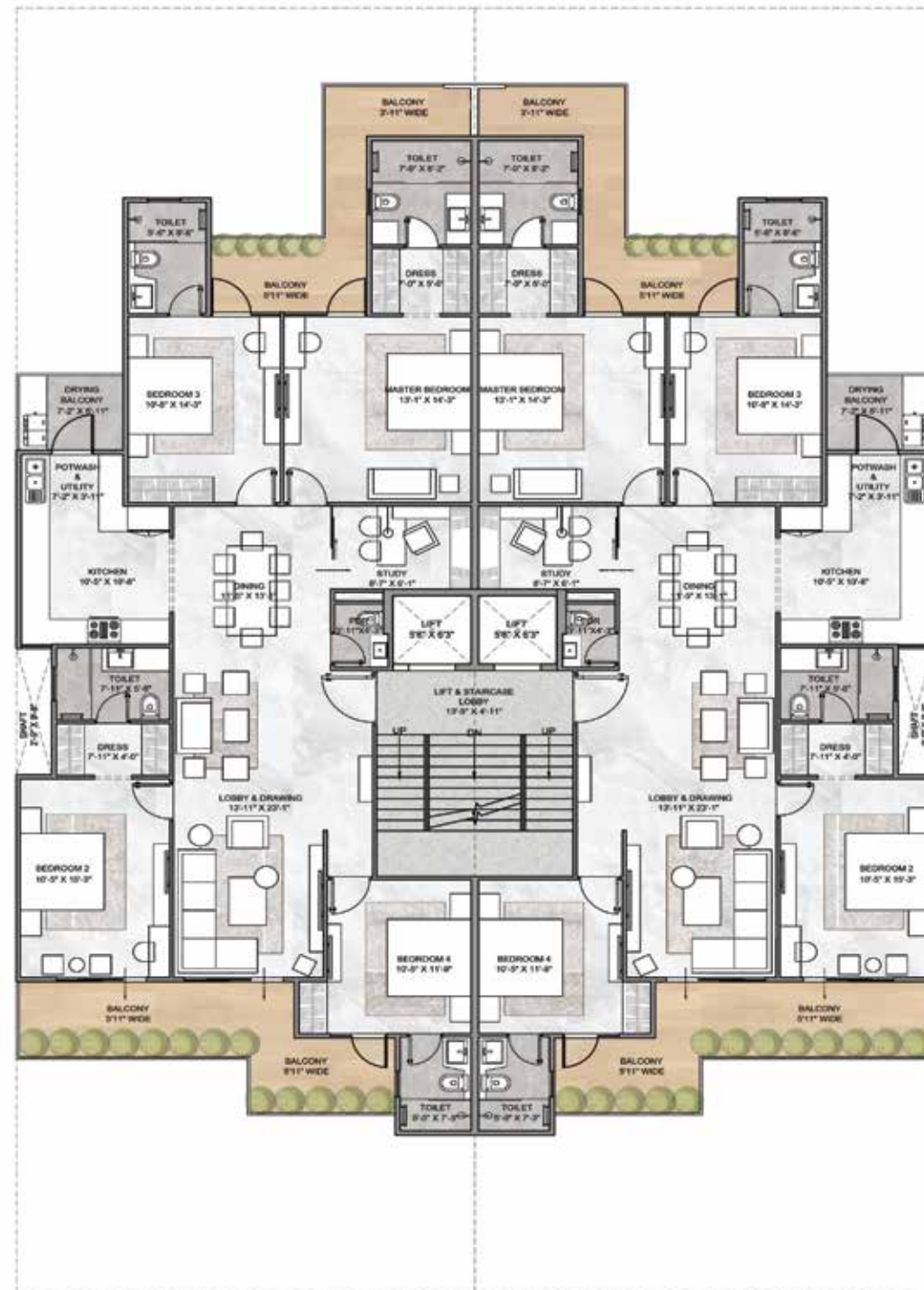
*All images and area calculations are a conceptual rendering and are proposed for illustrative purposes only.

*All images and area calculations are a conceptual rendering and are proposed for illustrative purposes only.

Unique Layouts for your Dream Home

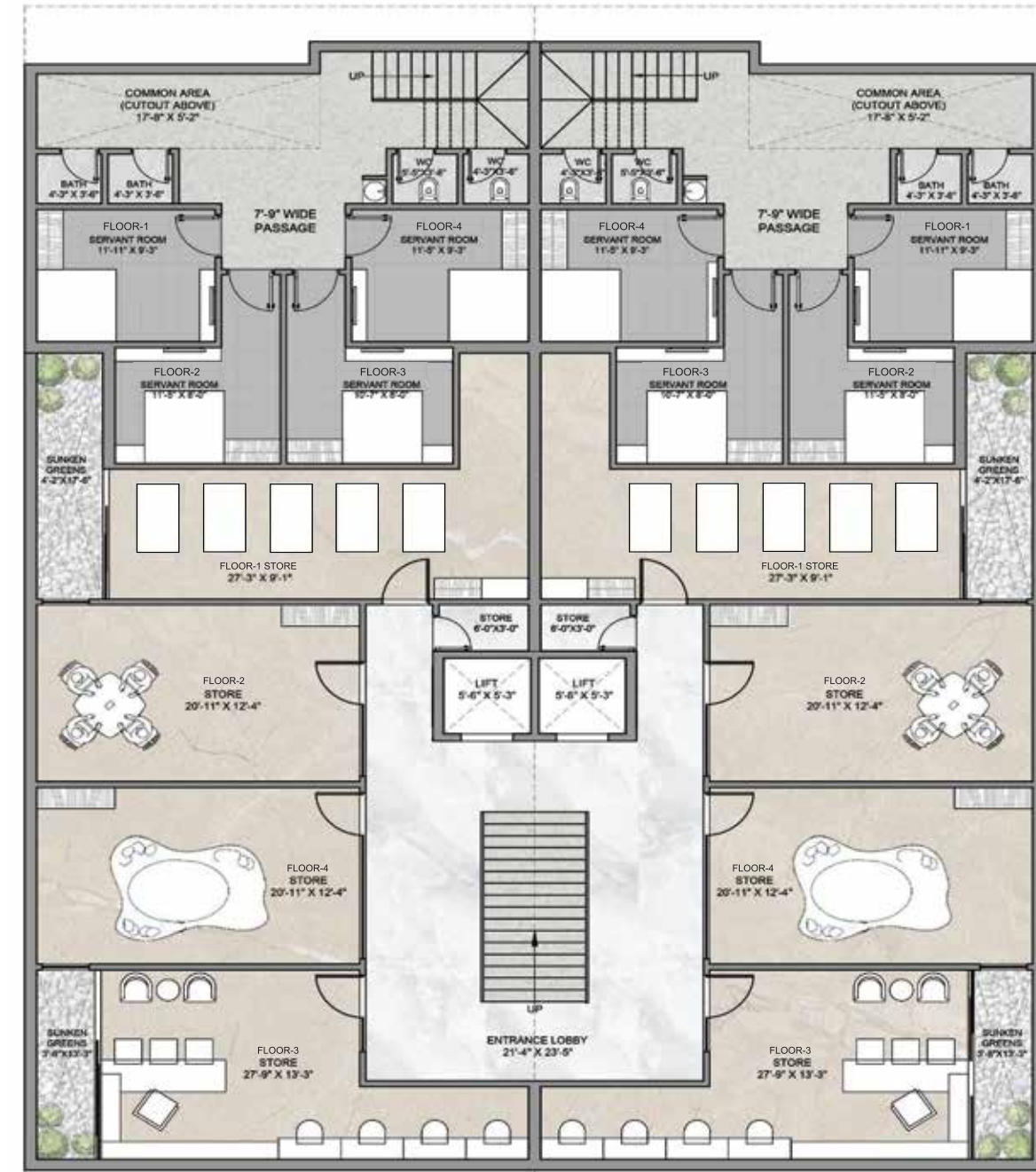
With the aim of building a strong foundation for tomorrow, **Orchid IVY** focuses on every little detail. From master planned structural designs to exceptional personal floor homes, we use a customer-centric approach to develop residences of

the highest standard. We believe that home is one place where you can be YOU. Keeping this in mind, **Orchid IVY** is a comfortable and luxurious cocoon nestled away from the pollution and humdrum of the city, yet well-connected with it.



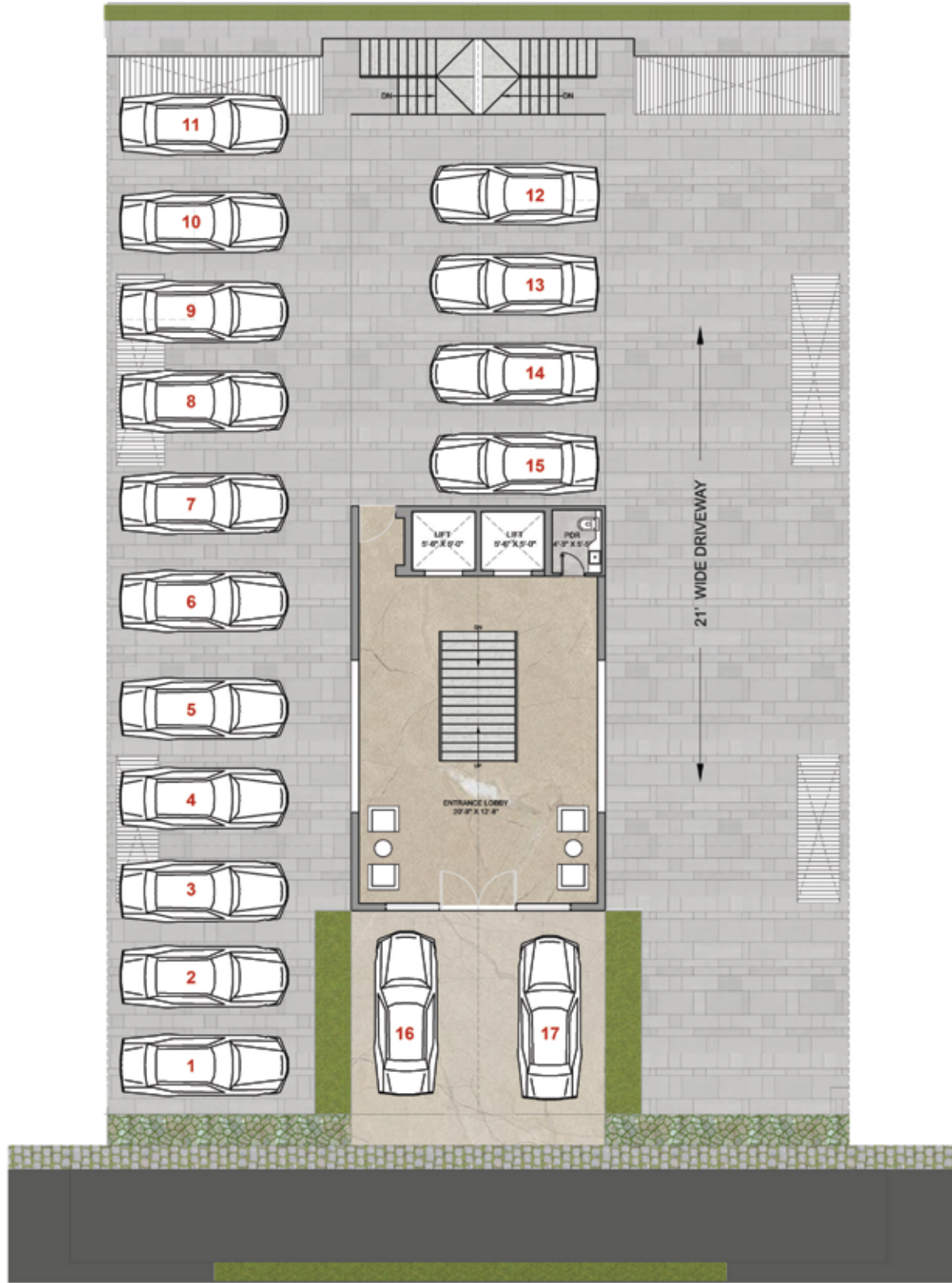
4+Study BHK Apartment on Plot Size - 346 sq yards(approx)
Additional allocated common area in basement and terrace

All images and area calculations are a conceptual rendering and are proposed for illustrative purposes only.

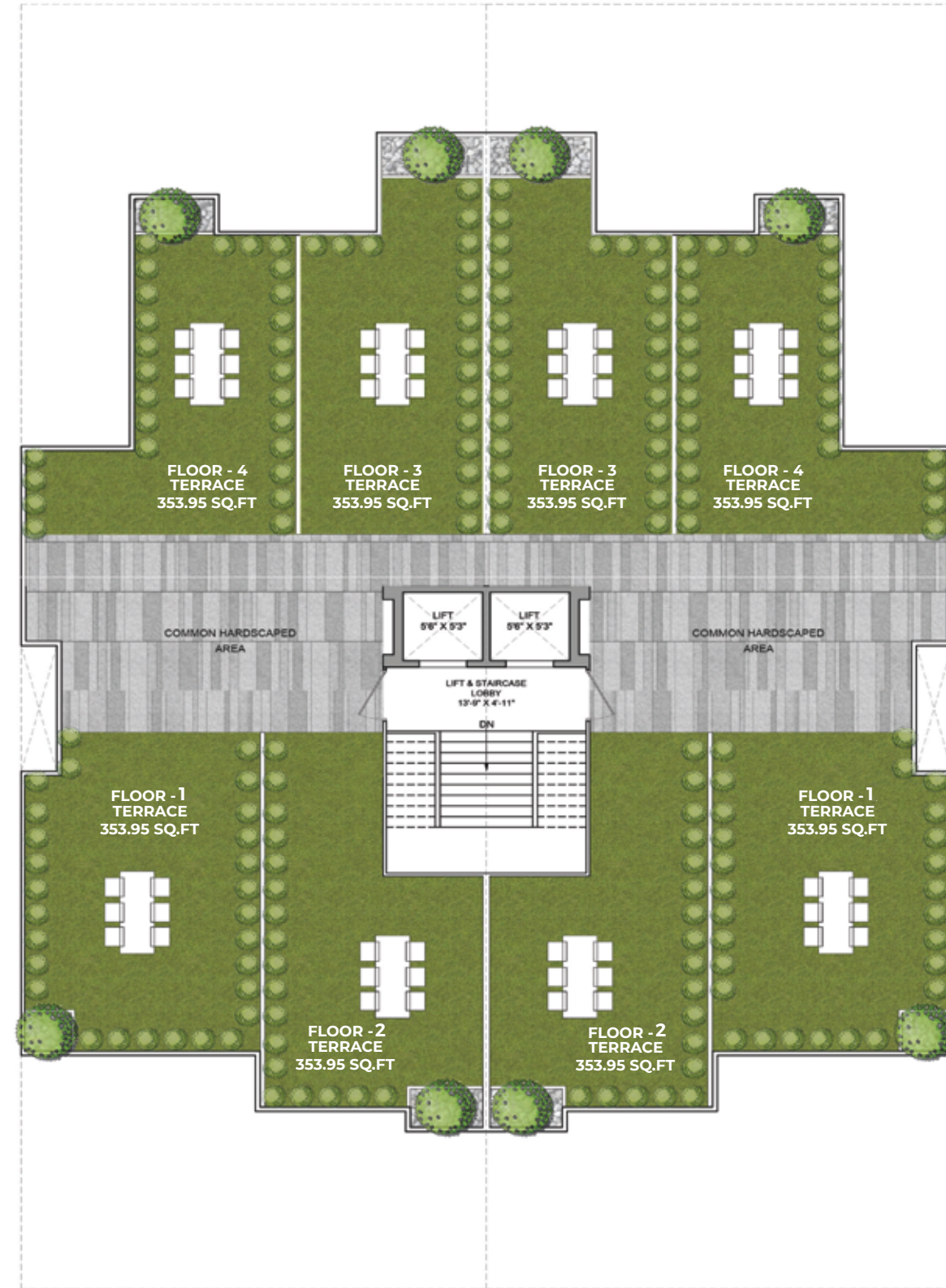


Basement
4+Study BHK Apartment

All images and area calculations are a conceptual rendering and are proposed for illustrative purposes only.



Ground floor parking
4+Study BHK Apartment



Terrace Garden
4+Study BHK Apartment

*All images and area calculations are a conceptual rendering and are proposed for illustrative purposes only.

*All images and area calculations are a conceptual rendering and are proposed for illustrative purposes only.

For more details or bookings, contact -



ORCHID INFRASTRUCTURE DEVELOPERS PVT. LTD.

Level II, Global Arcade,
Mehrauli-Gurugram Road,
Gurugram - 122 002.

+91 93100 88044
orchidivyfloors.com
oidpl.com

Rera No. : RC/REP/HARERA/GGM/597/329/2022/72 Dated : 01.08.2022
RC/REP/HARERA/GGM/646/378/2022/121 Dated : 13.12.2022

All images (other than any actual images), Visuals etc. shown herein are illustrative or indicative only. Nothing Contained herein intends to constitute a legal offering on the company's Part and any buyer of dwelling Unit in the Project shall be governed solely by the terms of the " Agreement for sale/Sub-lease" to be executed with him/her.