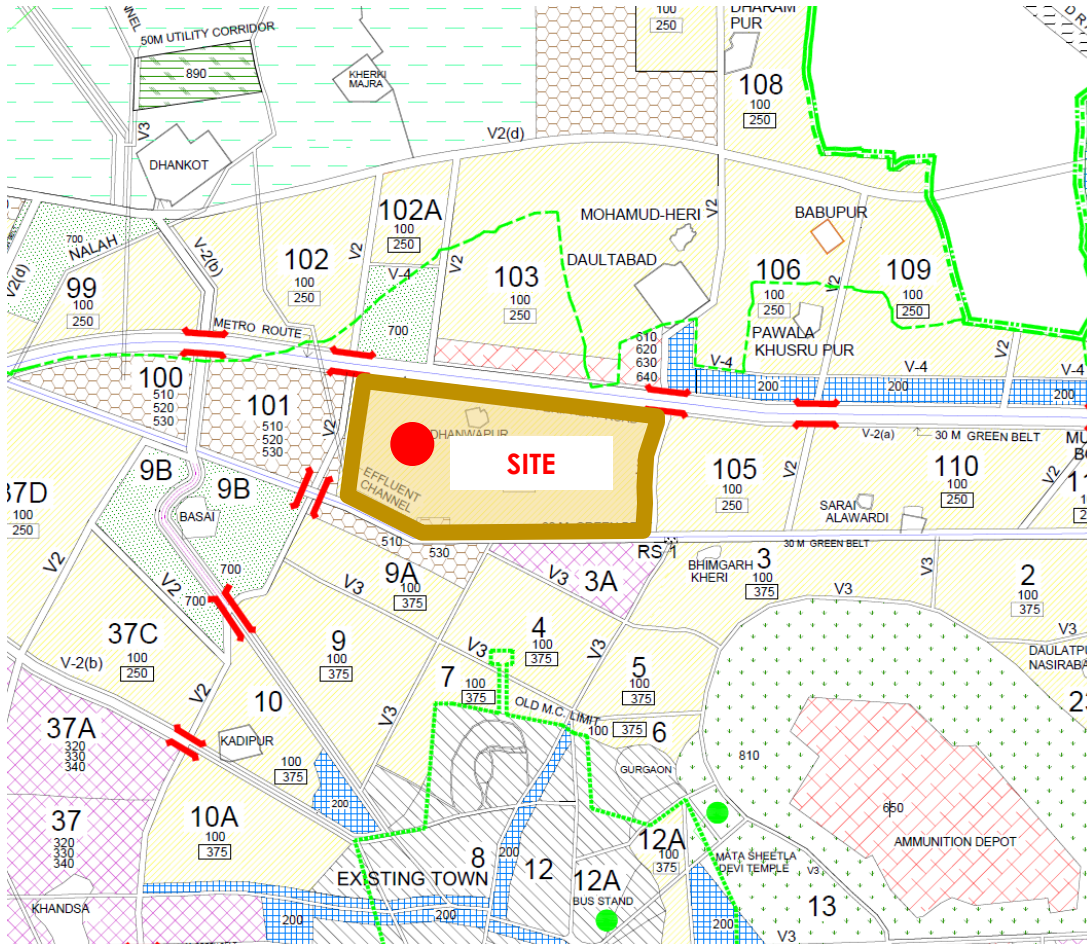




SITE ANALYSIS



Site Details:

Site Location: Sector 104, Gurugram

Site Co-ordinates:
 28°28'31.48"N, 76°59'20.61"E

Geological Zone:
 Seismic Zone IV

Climatic Zone: Monsoon-influenced Humid Subtropical Climate & A Hot Semi-arid Climate



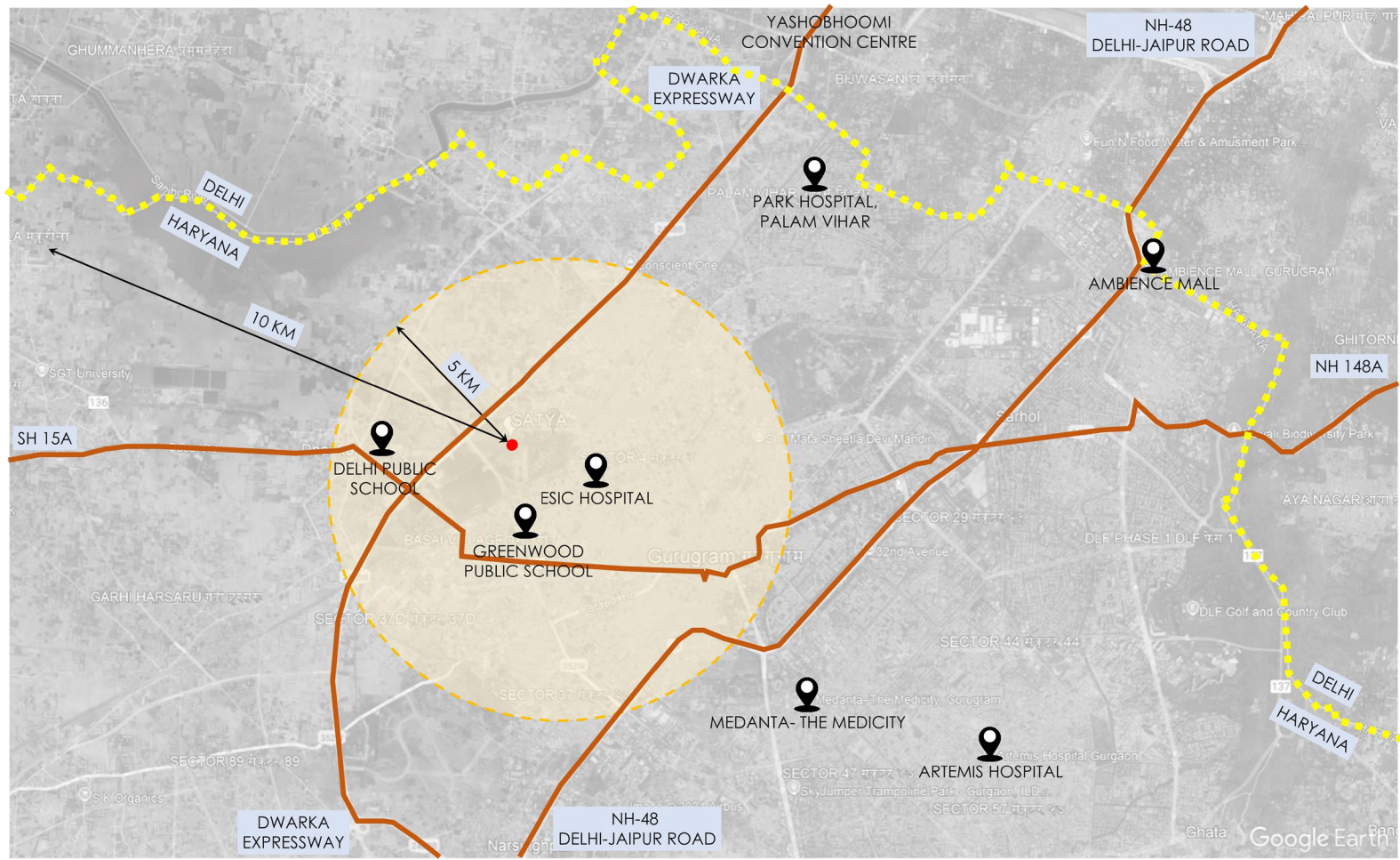
Indira Gandhi International Airport: 22 kms

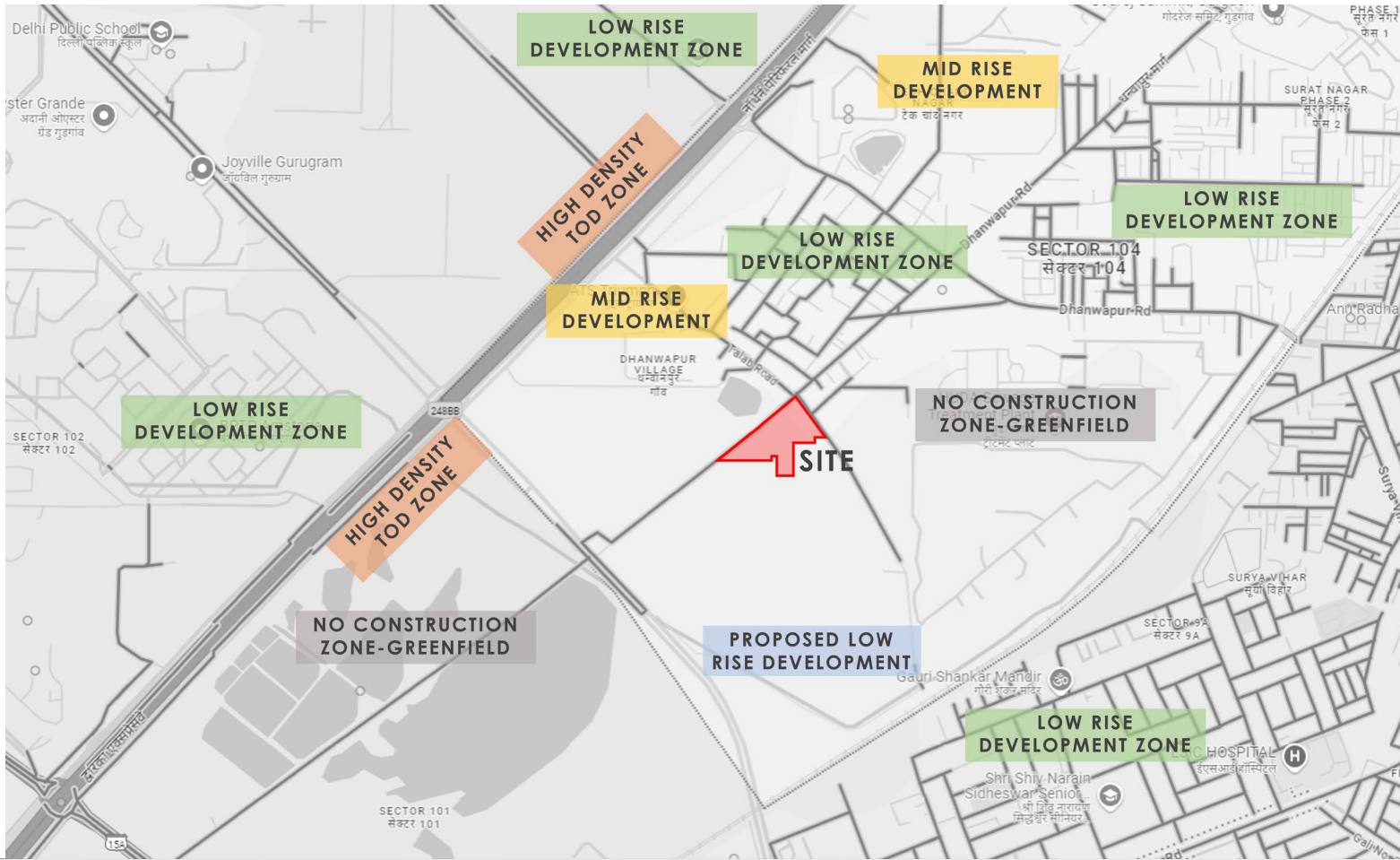


Gurgaon Railway Station: 3.5 kms

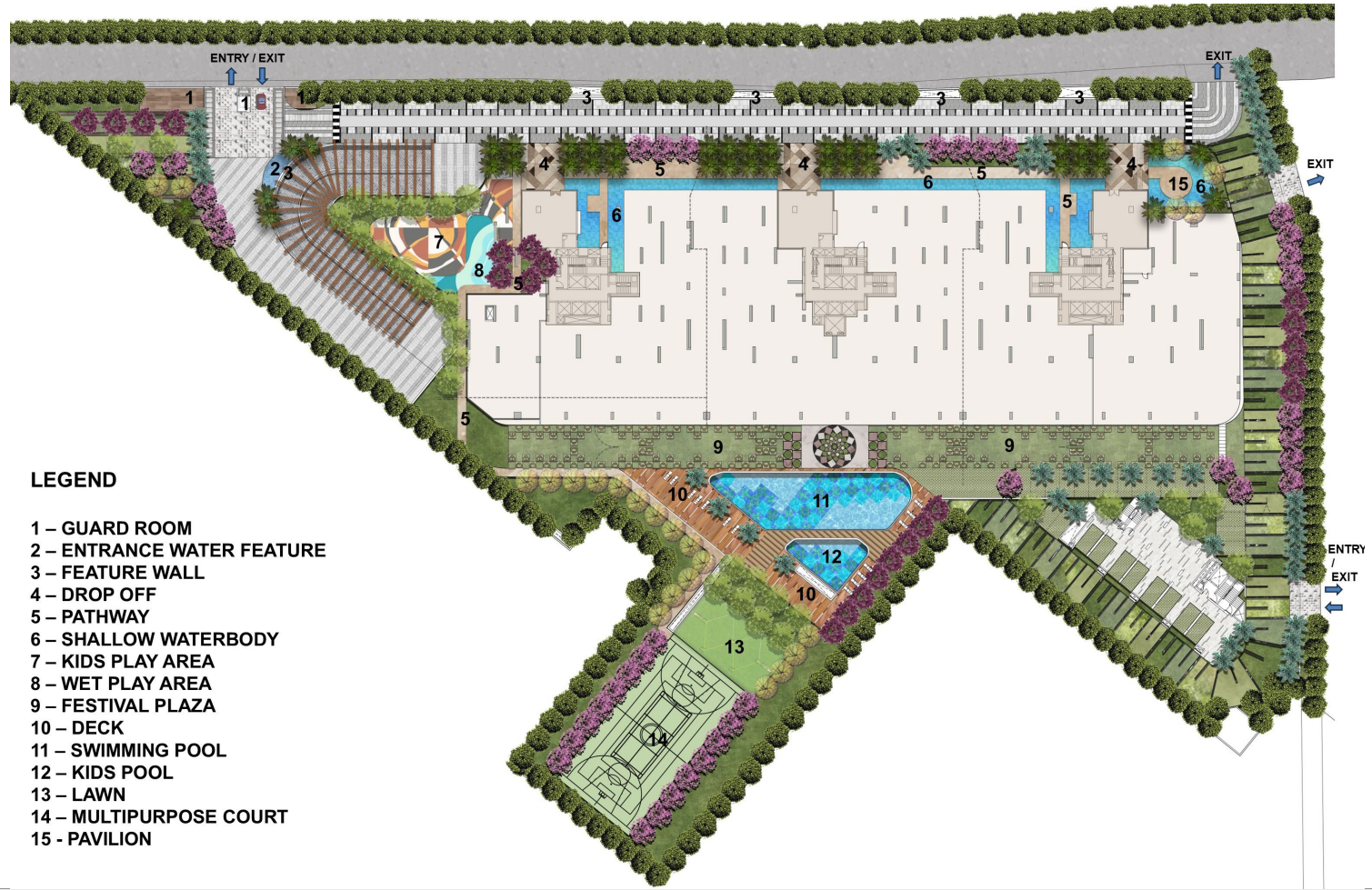


Huda City Centre Metro Station: 15.7 kms





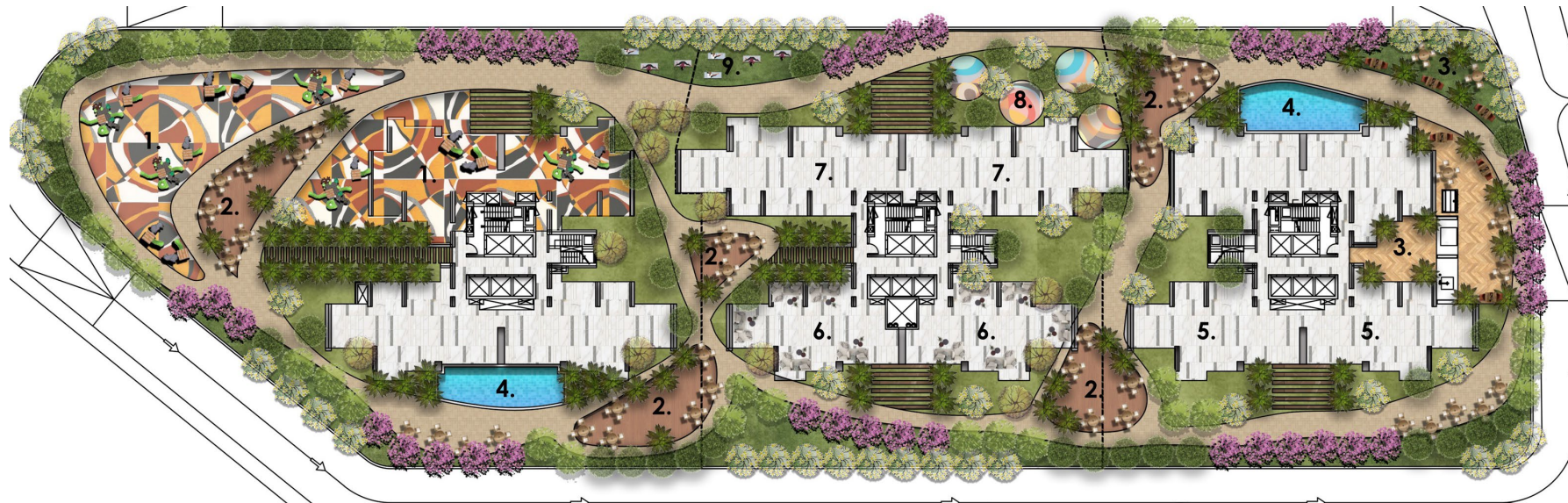
NEARBY DEVELOPMENTS



LEGEND

- 1 – GUARD ROOM
- 2 – ENTRANCE WATER FEATURE
- 3 – FEATURE WALL
- 4 – DROP OFF
- 5 – PATHWAY
- 6 – SHALLOW WATERBODY
- 7 – KIDS PLAY AREA
- 8 – WET PLAY AREA
- 9 – FESTIVAL PLAZA
- 10 – DECK
- 11 – SWIMMING POOL
- 12 – KIDS POOL
- 13 – LAWN
- 14 – MULTIPURPOSE COURT
- 15 - PAVILION

PODIUM LEVEL PLAN



LEGEND

1. KIDS PLAY AREA
2. SEATING NODES
3. BARBEQUE + SEATINGS
4. SHALLOW WATERBODY
5. OUTDOOR SEATINGS
6. READING AREA
7. SENIOR CITIZEN AREA
8. EXERCISE STATIONS
9. YOGA

SCALE
1:250

GROUND PLAN



ARTISTIC RENDERINGS

ARTISTIC RENDERINGS



ARTISTIC RENDERINGS





ARTISTIC RENDERINGS



ARTISTIC RENDERINGS





ARTISTIC RENDERING SNIPPETS

TOWER CROWN



CLUB PATIO



VISUAL AMALGAMATION OF EWS AND PODIUM



EARTHY BROWN & BEIGE TONALITY AT THE BOTTOM FAÇADE OF THE PODIUM WITH A LUSH GREEN TOP AND SATYA TOWERS EMANATING FROM IT..

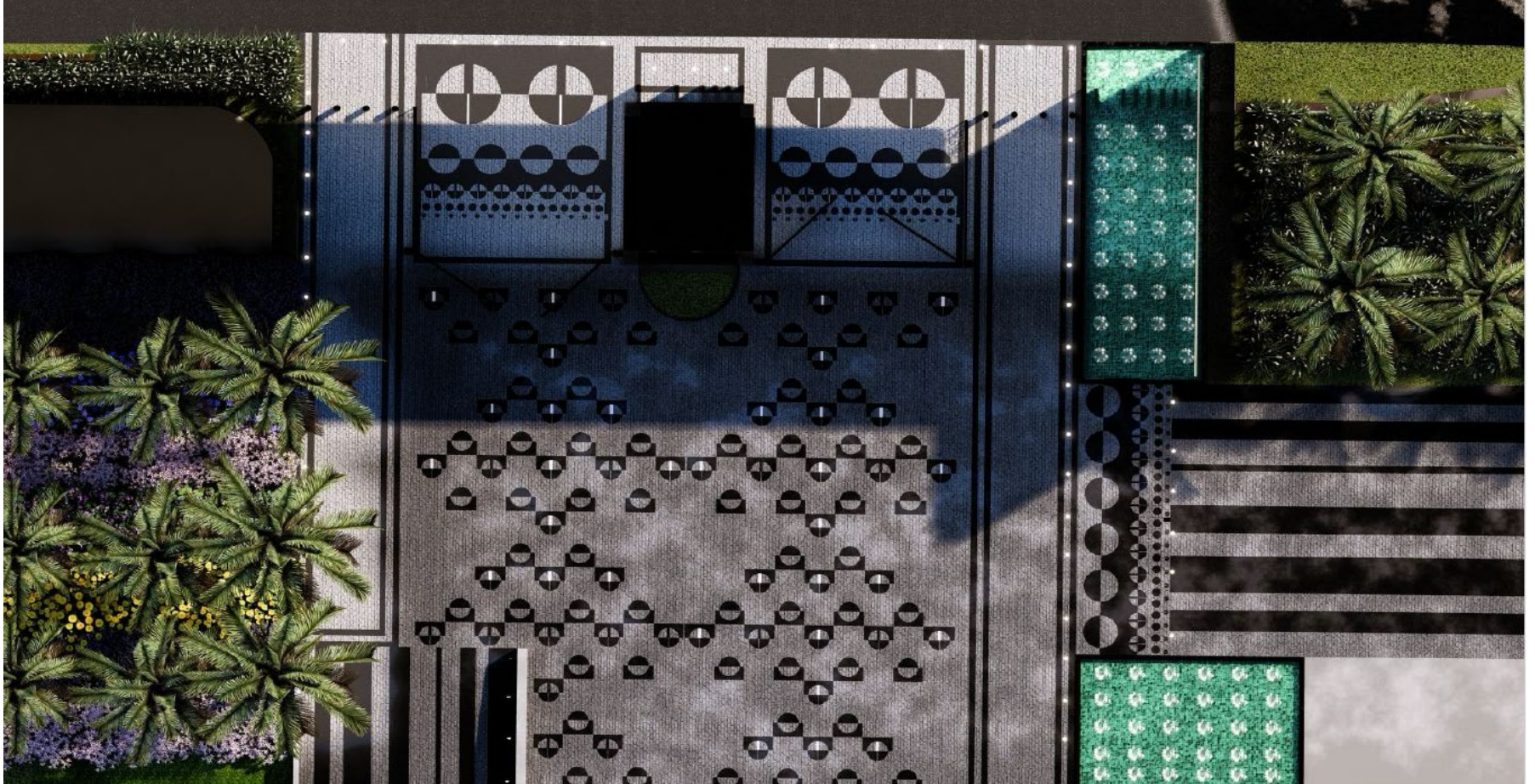


LANDSCAPE VISION

ENTRANCE GATE



ENTRANCE PAVEMENT PATTERN



ENTRANCE INSIDE VIEW



ENTRANCE INSIDE VIEW -2



REAR LANDSCAPE



SWIMMING POOL AND COURT VIEW



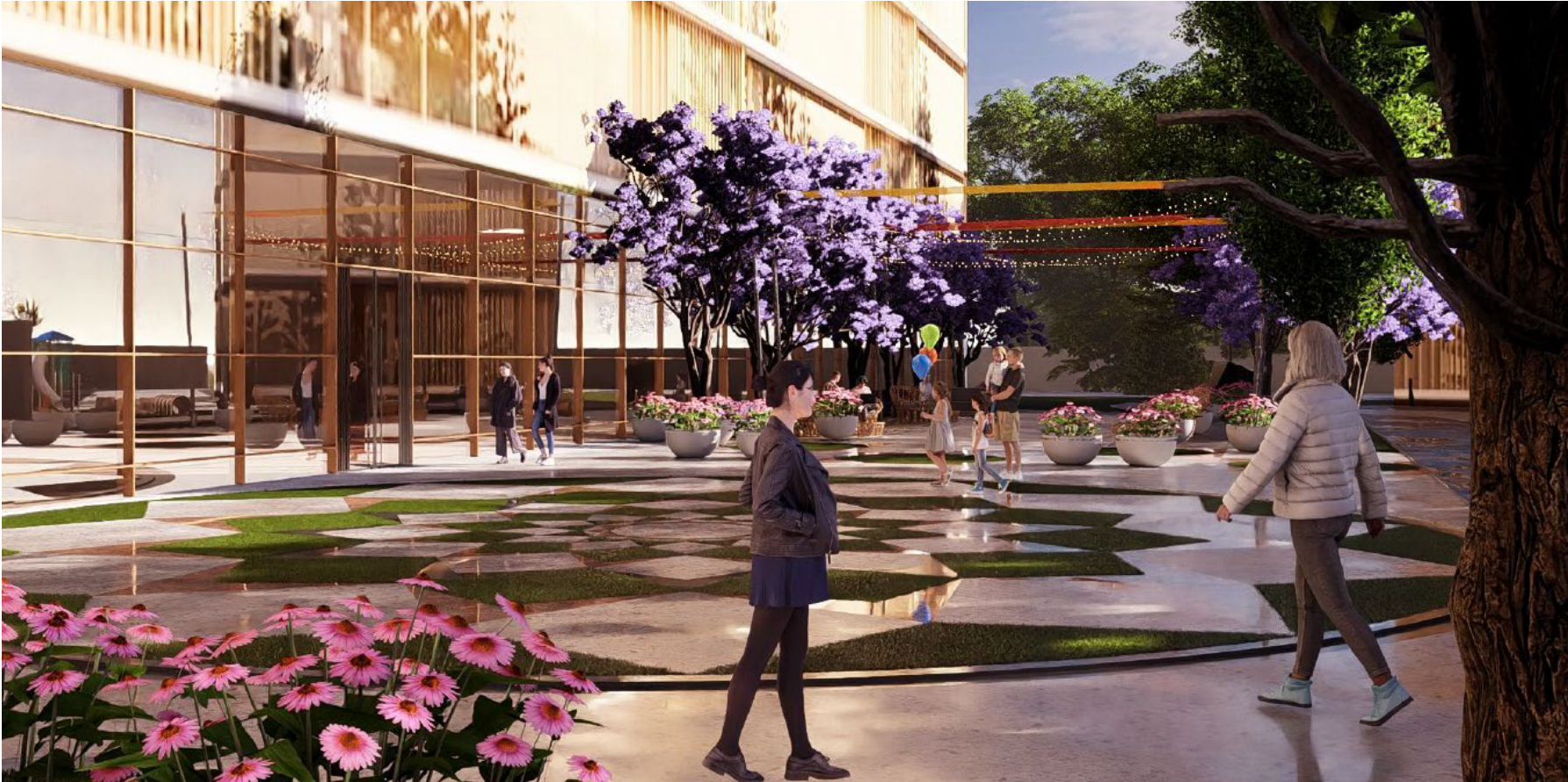
SWIMMING POOL DECK VIEW



FESTIVAL PLAZA VIEW



FESTIVAL PLAZA VIEW -2



BASKETBALL COURT VIEW



MULTISPORT COURT VIEW



PODIUM TOP VIEW - 1



PODIUM TOP VIEW -2



PODIUM TOP VIEW -3



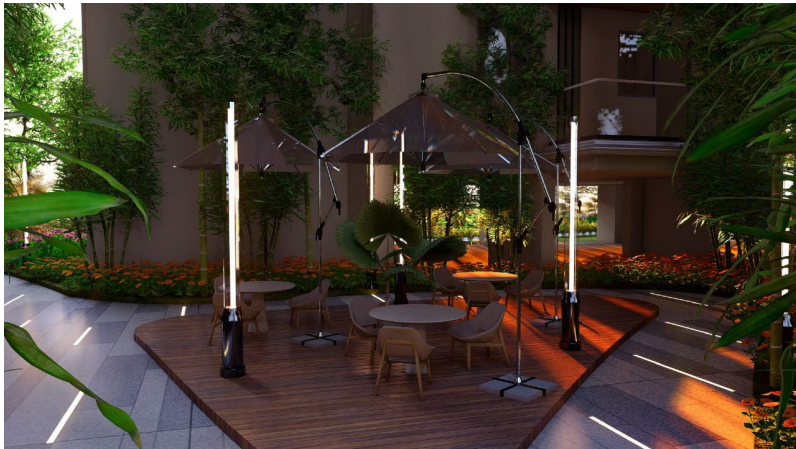
PODIUM TOP VIEW -4



VARIOUS SEATING NODES



VARIOUS SEATING VIEWS



TOWER & UNIT PLANS

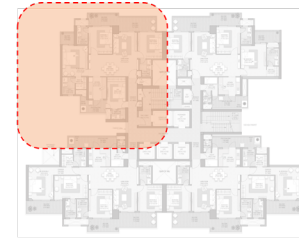
TOWER 1 AND 3: 4 UNITS TO A CORE (TYPICAL LEVEL PLAN)



TOWER 1 (G+47)	No. of Units
4 BHKs UNIT (SMALL)	84
3 BHKs UNIT	34
3 BHK +SPR UNIT	34
DUPLEX (4BHK+SPR UNIT)	4
DUPLEX (4BHKs UNIT)	4
TOTAL FOR TOWER 1	160

TOWER 1: 3 BHK + SERVICE PERSONAL ROOM (2240 SQ.FT.)

MAIN ENTRY
SERVICE ENTRY

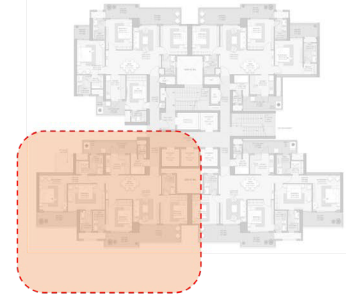


KEY PLAN

TOWER 1: 3 BHK + UTILITY (2180 SQ.FT.)

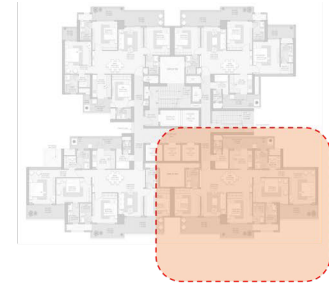


TOWER 1: 4 BHK + UTILITY (4BHK SMALL TYPE1 - 2656 SQ.FT.)



KEY PLAN

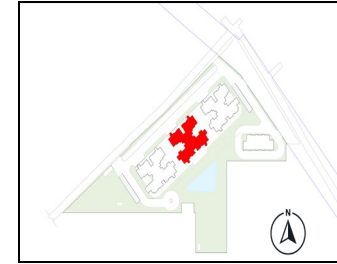
TOWER 1: 4 BHK + UTILITY (4BHK SMALL TYPE2 -2653 SQ.FT.)



KEY PLAN

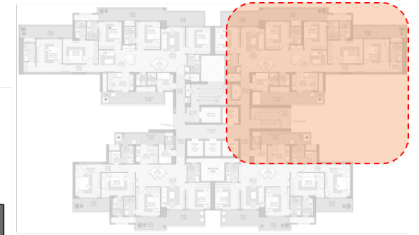
MAIN ENTRY 
SERVICE ENTRY 

TOWER 2: 4 UNITS TO CORE (5BHK+UTILITY & 4BHK+UTILITY)



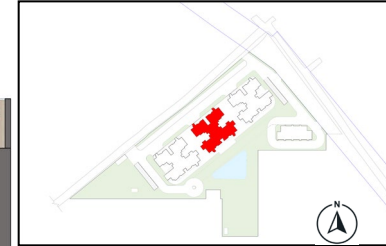
TOWER 2 (G+47)	No. of Units
4 BHK APARTMENT (SMALL)	84
5 BHK APARTMENT	76
4 BHK LARGE(REFUGE)	8
TOTAL FOR TOWER 2	168

TOWER 2: 5 BHK+UTILITY (3463 SQ.FT.)



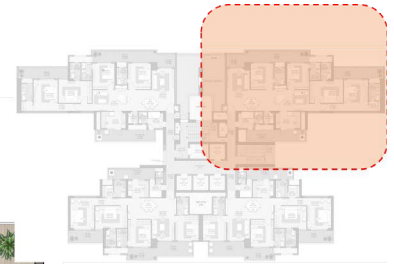
KEY PLAN

TOWER 2: 4 UNITS TO CORE (5BHK+UTILITY & 4BHK+UTILITY) (17th, 26th, 34th, 43rd)



KEY PLAN

TOWER 2: 4 BHK+UTILITY_REFUGE TERRACE (3130 SQ.FT.)

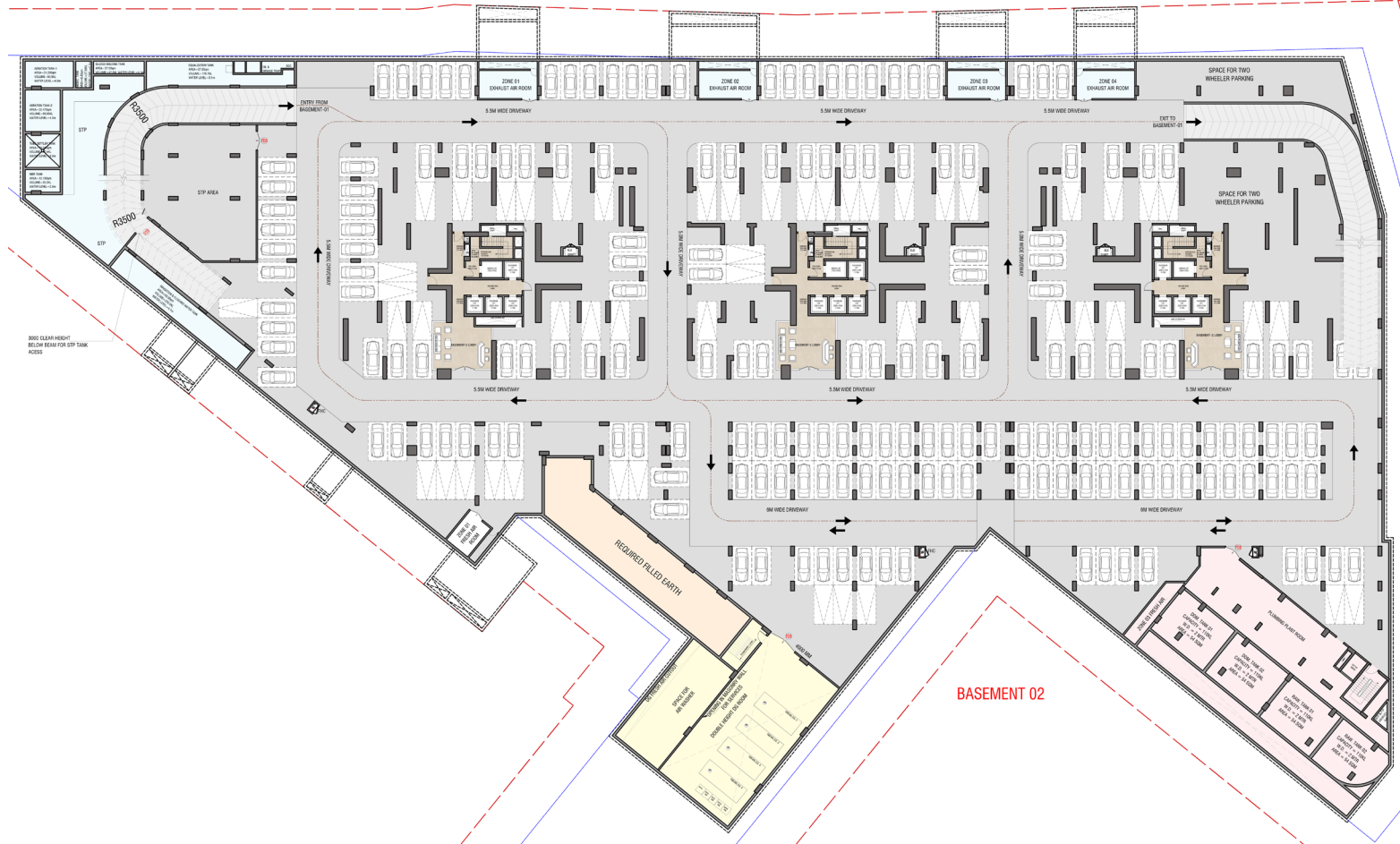


KEY PLAN

MAIN ENTRY 
 SERVICE ENTRY 

BASEMENT PLAN

BASEMENT-2 PLAN



BASEMENT 02

AREA STATEMENT

DESCRIPTION						
S.NO.	UNIT TYPE	UNIT NOS.	SALABLE/UNIT		TOTAL SALABLE/UNIT TYPE	
			SQ.M.	SQ.FT.	SQ.M.	SQ.FT.
1	3BHK	68	202.556	2180.288	13773.781	148259.599
2	3BHK+SPR	68	208.092	2239.885	14150.276	152312.160
3	4BHK- TYPE-1	84	246.752	2656.011	20727.143	223104.892
4	4BHK- TYPE-2	84	246.480	2653.086	20704.320	222859.230
5	4BHK- TYPE-3	42	247.753	2666.785	10405.613	112004.982
6	4BHK- TYPE-4	42	246.446	2652.722	10350.740	111414.335
7	4BHK-LARGE-TYPE-1	4	290.804	3130.180	1163.214	12520.719
8	4BHK-LARGE-TYPE-2	4	291.551	3138.226	1166.204	12552.903
9	5BHK-TYPE-1	38	321.715	3462.907	12225.166	131590.466
10	5BHK-TYPE-2	38	321.715	3462.907	12225.166	131590.466
11	4BHK-DUPLEX(Lower + Upper)	6	321.828	3464.124	1930.968	20784.746
12	4BHK+SPR-DUPLEX (Lower + Upper)	6	331.183	3564.819	1987.097	21388.911
13	4BHK-DUPLEX (26th Floor)	2	321.828	3464.124	643.656	6928.249
14	4BHK+SPR-DUPLEX (26th Floor)	2	326.525	3514.681	653.050	7029.363
TOTAL SALABE AREA		488			122106.395	1314341.023

OUR TEAM



An India and Dubai based architectural design firm that's setting global standards. And making Ground to Reality promise a beacon of trust. With 50 years of rich experience, the roots are firmly cemented, even in Dubai. From commercial to residential and office spaces, their designs speak for themselves, embodying their commitment to turning dreams into tangible structures. **ground to reality**



JW CONSULTANTS LLP

Over four decades, JW Consultants LLP has been driven by innovation and has created its footprint across residential, commercial, industrial, retail, institutional, hospitality, and healthcare sectors, among others.



Pankaj Dharkar & Associates (PDA), a renowned MEP and Green Building Consulting Engineering Firm, established in 2006 by Mr. Pankaj Rajendra Dharkar.



Her designs are intrinsic to the site and the regional ecology of the place where the project is located thus making them environmentally sustainable in context.

THANK YOU

