

PARAS

BUILDTECH

TOWARDS  TOMORROW

# Paras Buildtech

Paras Buildtech, established in 2002 and backed by a strong brand heritage, is rapidly advancing "Towards Tomorrow." Known for its commitment to timely delivery, the company has over 15 million square feet in planning and development. With a diverse portfolio of 16+ projects, Paras Buildtech offers residential, commercial, and retail spaces in Gurgaon, Noida, Zirakpur, and Mohali. The company excels in all facets of real estate development, including land acquisition, procurement, construction, project management, and property management services. Supported by a team of highly experienced professionals, Paras Buildtech is dedicated to turning future aspirations into present realities.

---

# Business Legacy

60+ Years  
Of Business  
Legacy

15+ Million  
Sq.ft. Of  
Development

22 Years  
Of Craftsmanship  
In Real Estate

6500+  
Homes  
Delivered

Delivering  
Excellence In  
5 Cities  
3 States

20,000+  
Happy  
Families

# Group Verticals



- Established in 1960 under VRS Foods Limited
  - Produces 2.5 lacs+ liters of milk daily in Delhi Metro area using advanced technology.
  - Network covers 5,400 villages in Western U.P, Haryana, Rajasthan, Maharashtra & Gujarat
-

# Group Verticals



- Largest private hospital in Srinagar with 200 beds (CRISIL Report)
  - Expanded bed capacity from 1,250 (March 31, 2022) to 2,135 (March 31, 2024)
  - Approved hospital expansions in Gurugram and Ludhiana.
  - New Gurugram hospital (300 beds) planned for FY 2027 under long-term lease.
  - New Ludhiana hospital (up to 500 beds) planned for FY 2028 under long-term lease.
  - Projected total bed capacity increase to 2,935 by March 31, 2029.
-

# Delivered Projects

---

# GURUGRAM

PARAS  
DOWNTOWN  
CENTER

PARAS  
TWIN TOWERS

EKAM

PARAS DEWS  
Sector 106, Gurugram

PARAS  
QUARTIER  
LUXURY RESIDENCES

  
PARAS  
TRINITY



PARAS  
IRENE 

PARAS  
SQUARE

PARAS  
ARCADE 114

 PARAS  
TRADE  
centre

  
THE  
MANOR  
LUXURY RESIDENCES

Under Construction



# NOIDA

PARAS  
Avenue

Under Construction



PARAS  
ONE33



PARAS  
SEASONS  
a home for every season



# MOHALI

PARAS  
DOWNTOWN  
SQUARE

THE MALL THAT HAS IT ALL

Zirakpur, Delhi-Chd-Shimla Highway (Y-Junction), Punjab







PARAS

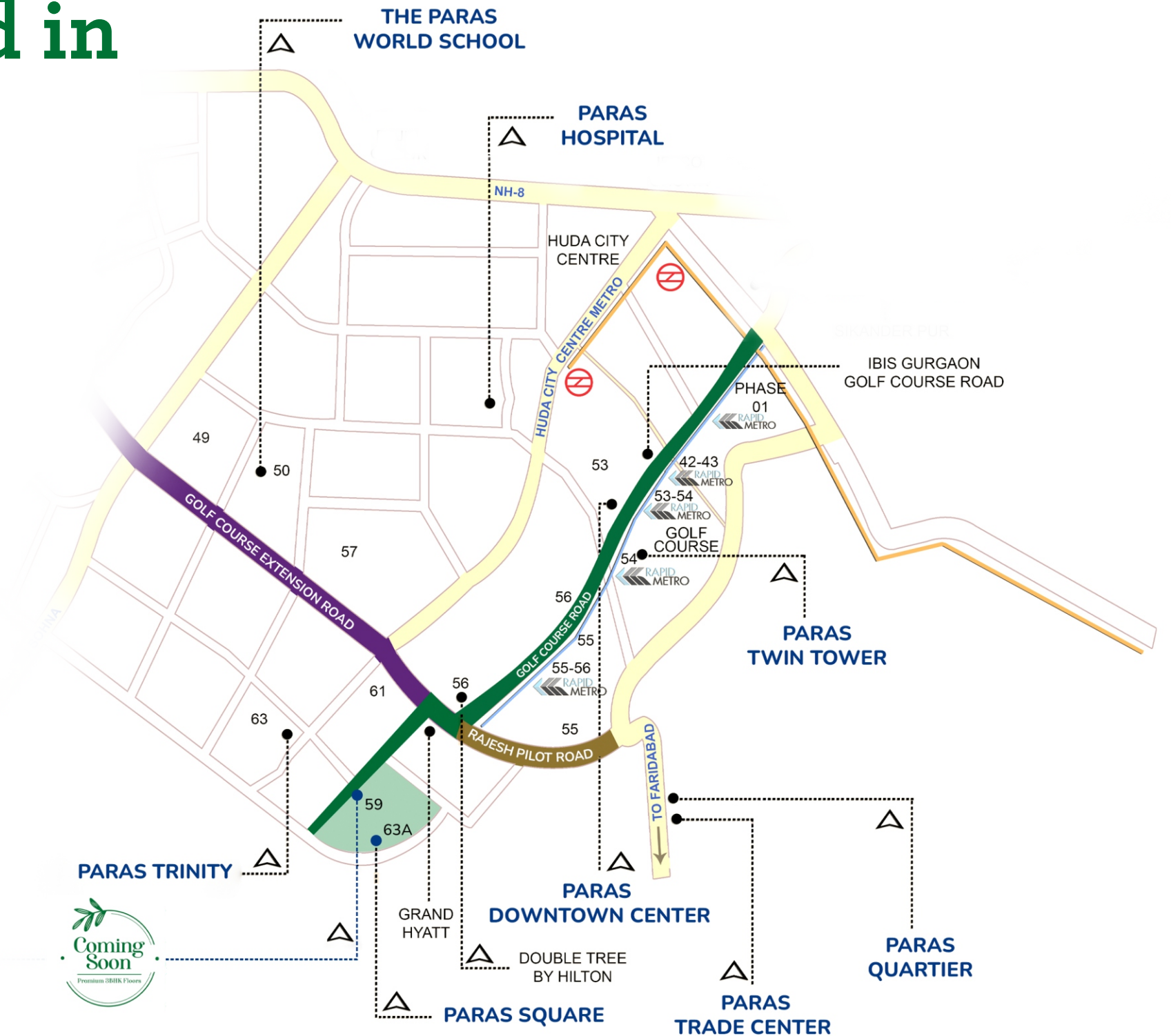
PANORAMA

Lifestyle for a lifetime



# A Location Nestled in Nature's Embrace

-  EXISTING METRO STATION
-  EXISTING METRO LINE
-  EXISTING RAPID METRO
-  GOLF COURSE EXTENSION ROAD
-  RAJESH PILOT ROAD
-  GOLF COURSE ROAD



# Education & Healthcare

Just a few minutes away from the commercial hubs, reputed schools & hospitals, and recreational spots.

## Schools



- Heritage School
- Sri Ram School
- Delhi Public School
- Lancers Shikshantar
- GD Goenka School
- St. Xavier's School

## Medical Facilities

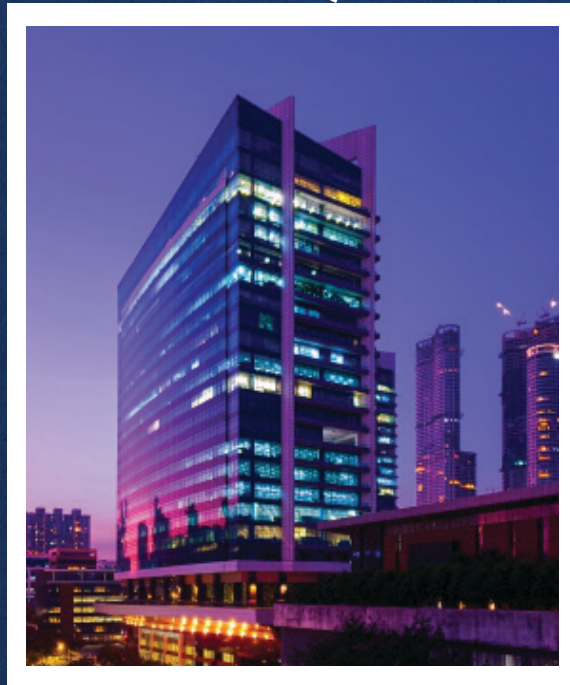


- Paras Hospital
- Alchemist Hospital
- Max Hospital
- Artemis Hospital
- Fortis Medicity

# Commercial & Recreational Hubs

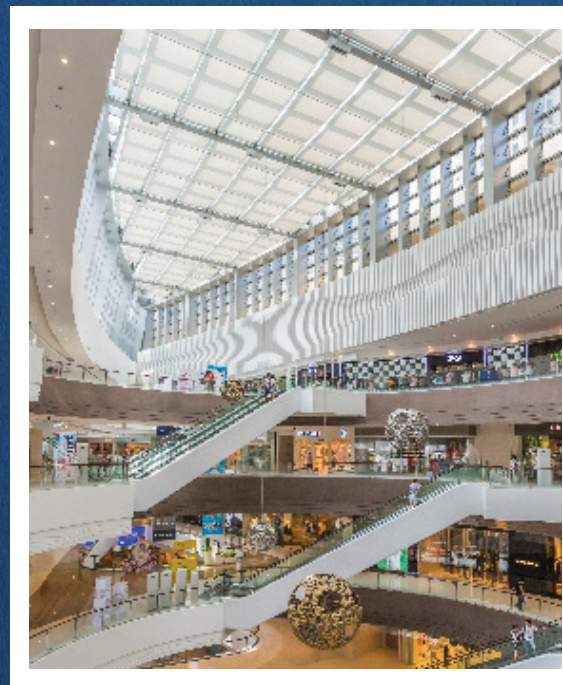
Just a few minutes away from the commercial hubs, reputed schools & hospitals, and recreational spots.

## Tech Parks/SEZs



- Cybercity
- Horizon Centre
- Magnum Global Park
- Capital Cyberscape
- Ascendas IT Park

## Hotels

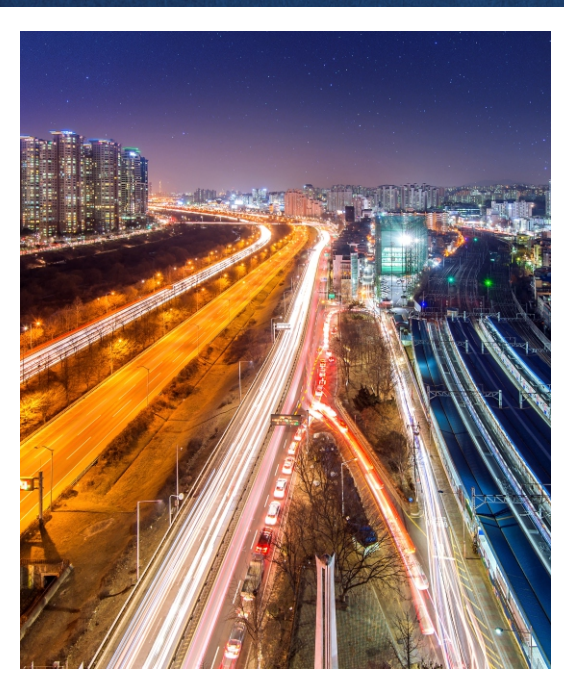


- Grand Hyatt
- Citadines
- Redfox by Lemon Tree
- Doubletree by Hilton
- Ascott Ireo City

# Connectivity

Just a few minutes away from the commercial hubs, reputed schools & hospitals, and recreational spots.

## Commute



- **Strategically located on Golf Course Extension Road**
  - **15 Mins to HUDA Metro**
  - **5 Mins to Rapid Metro Station**
  - **30 Mins to Indira Gandhi International Airport**
  - **30 Mins to Gurgaon Railway Station**
-

Center Of Your Happiness  
A World of Lifestyle Amenities

---

# Introducing Low Rise Development

Tucked away in Sector 59, Gurugram, our latest project finds its place amidst the natural beauty of the Golf Course Extension Road. This flourishing locale, celebrated for its swift growth and prominence as a residential and commercial haven, harmonizes with nature's elegance.



**Prime Location On  
Golf Course Extension**



**Luxurious  
30000 sq.ft. Club**



**Low Density  
Living**



**Unique Roman  
Architecture**



**International Topiary  
of Flowers and Trees**





PARAS



**Retail**

**Tennis Court**

**Kids Playing Area**

**Open Lawn**

**Open Gym**

**Cricket Pitch**

**The Center Of Bliss**















Spa



Library



Billiards Room



Banquet Hall



**Restaurant**



**Card Room**



**Squash Court**



**Co-Working Space**



**Private Movie Theatre**



**Fitness Studio**



Open Space Garden



Kids Play Area



Open Air Gym



Roof Top Pool



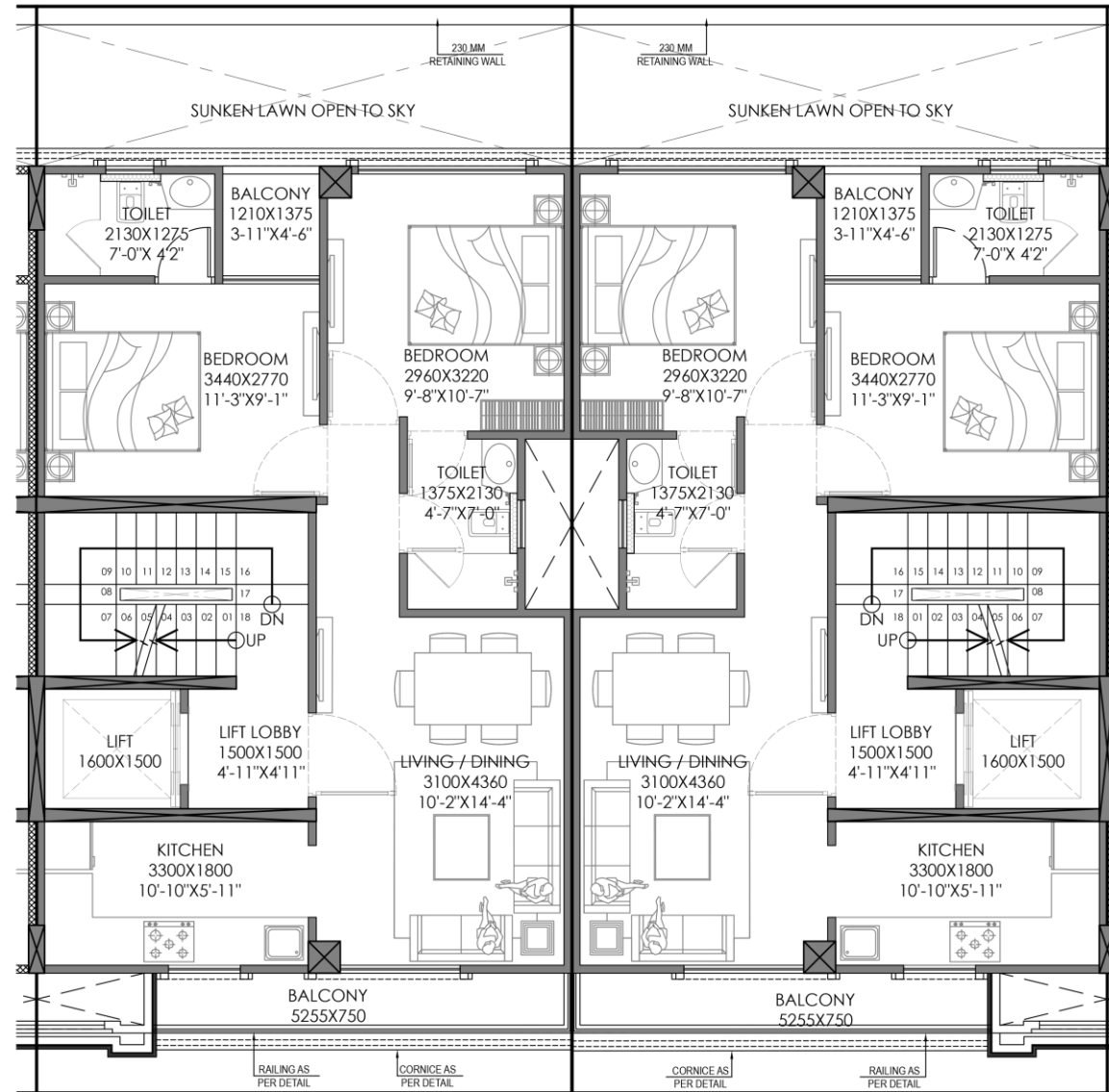
## LEGEND

1) Grand Arrival with Feature Wall	7) Kids Play Area
2) Commercial Plaza	8) Club / Community
3) Tennis Court	9) Water Bodies
4) Open Gym	10) Basket Ball Court
5) Cricket Pitch	11) Jogging Track
6) Party Lawn	12) Gazebo

Map



# 2BHK UNIT - 1121 SQ.FT.

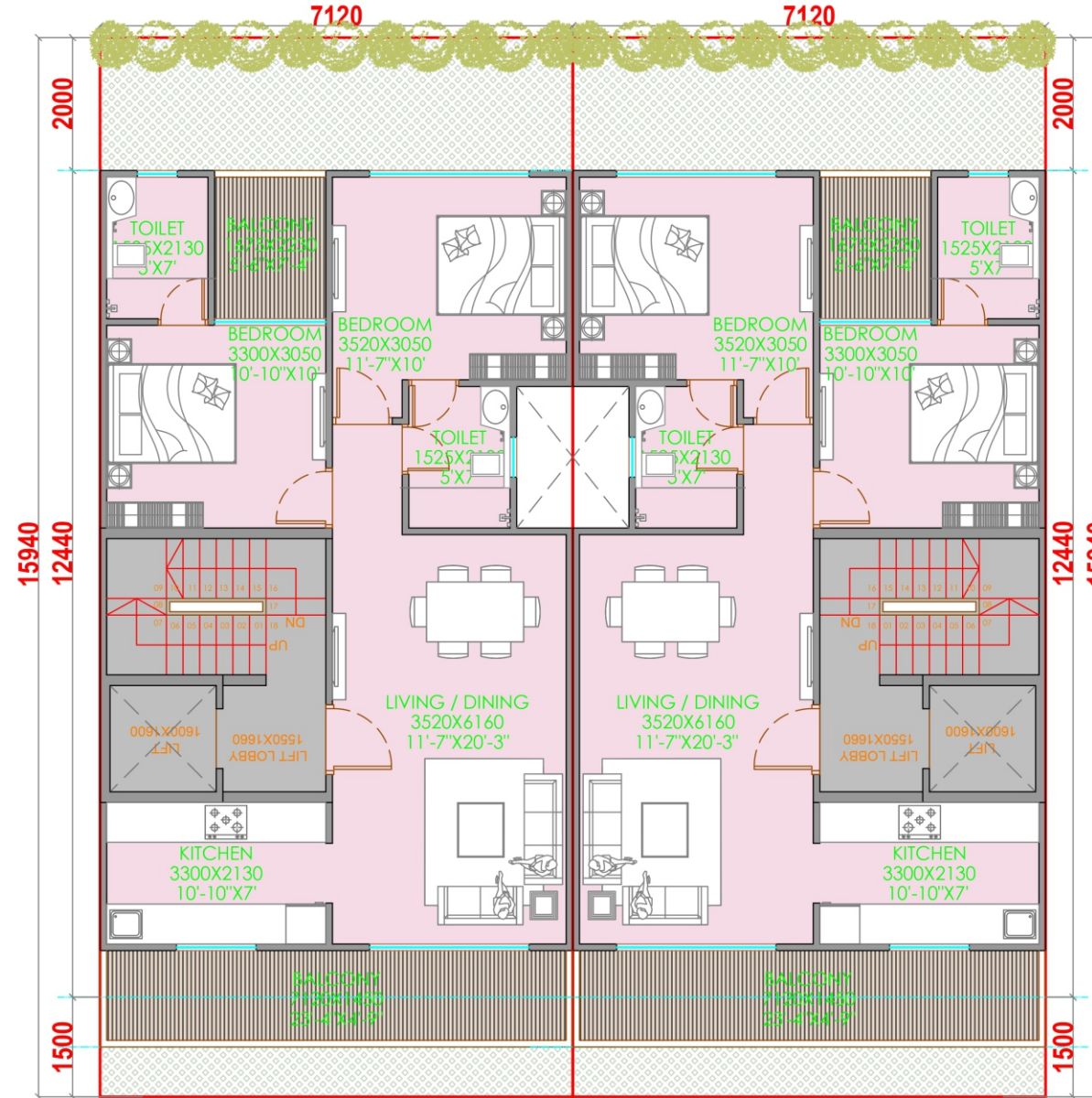


Balconies (Dim.)	17'3"x2'6" / 4'x 4'6"
Lift Lobby (in Mtrs)	1.6x1.56
Living Cum Dining	10'2"x 14'4"
Bedroom 1	9'9"x10'7"
Bedroom 2	11'4"x 9'
Kitchen	10'10" x 6'
Wash Room	7'x4'2"/4'6"x7'
No.of W/Room	2

Floor Plan

TYPE-C

# 2 BHK UNIT - 1390 SQ.FT.

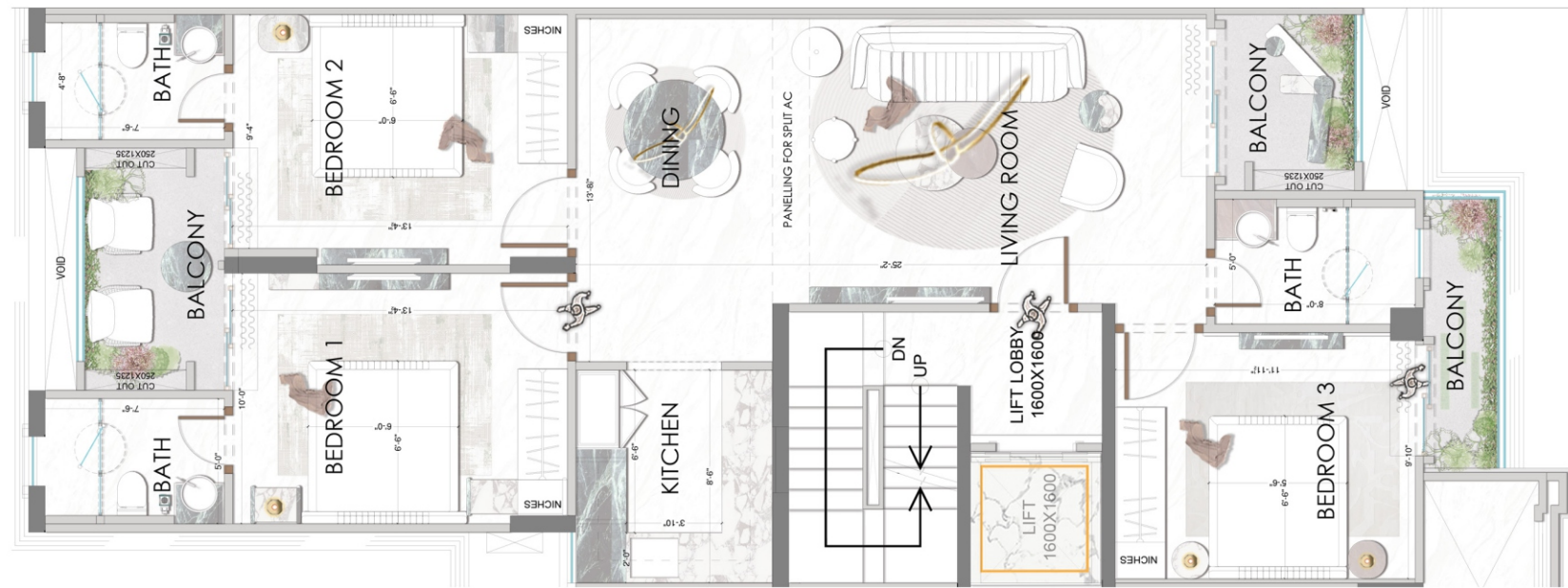


Balconies (Dim.)	18'7"x3'7" / 5'5"x 6'
Lift Lobby (in Mtrs)	1.6x1.66
Living Cum Dining	11'7"x20'3"
Bedroom 1	11'7"x10'
Bedroom 2	10'10"x10'
Kitchen	10'10"x7'
Wash Room	5'x7' (2)
No.of W/Room	2

Floor Plan

TYPE-F

# 3 BHK Unit - 1750 Sq. ft.



Living	12.4' x 25.2'
Dining	12.4' x 25.2'
Master Bedroom	10.0' x 13.4'
Bedroom 2	10.0' x 13.4'
Guest Bedroom	10.0' x 12'
Kitchen	9.0' x 8.0'
Washroom	3 No.s
Washroom 1 (Dim.)	5' x 7'6"
Washroom 2 (Dim.)	5' x 7'6"
Washroom 3 (Dim.)	5' x 8'

Floor Plan

TYPE-A

# Unit Sizes | PLCs

<b>2 BHK Unit</b>	<b>2 BHK Unit</b>	<b>3 BHK Unit</b>
<b>1121 Sq. ft.</b>	<b>1390 Sq. ft</b>	<b>1750 Sq. ft</b>

<b>PLC</b>	<b>CORNER</b>	<b>CORNER + GREENS</b>	<b>NEAR RETAIL + MAIN SECTOR ROAD</b>
<b>AMOUNT( ₹)</b>	<b>1000/sq. ft.</b>	<b>1500/sq.ft.</b>	<b>1000/sq.ft.</b>

# Payment Plan

<b>Booking Amount (Within 7 Days)</b>	<b>10% of Total Cost</b>
<b>Within 90 Days</b>	<b>25% of Total Cost</b>
<b>On Completion of the Structure</b>	<b>30% of Total Cost</b>
<b>On Application of OC</b>	<b>25% of Total Cost</b>
<b>On Offer of Possession</b>	<b>10% of Total Cost</b>

**\*GST and Possession Charges As Applicable**

# PARAS

BUILDTECH

Images shown in the presentation are just for representation purpose only. Actually product may vary. Please contact your RM for more details.

---