

Live long. Live well.

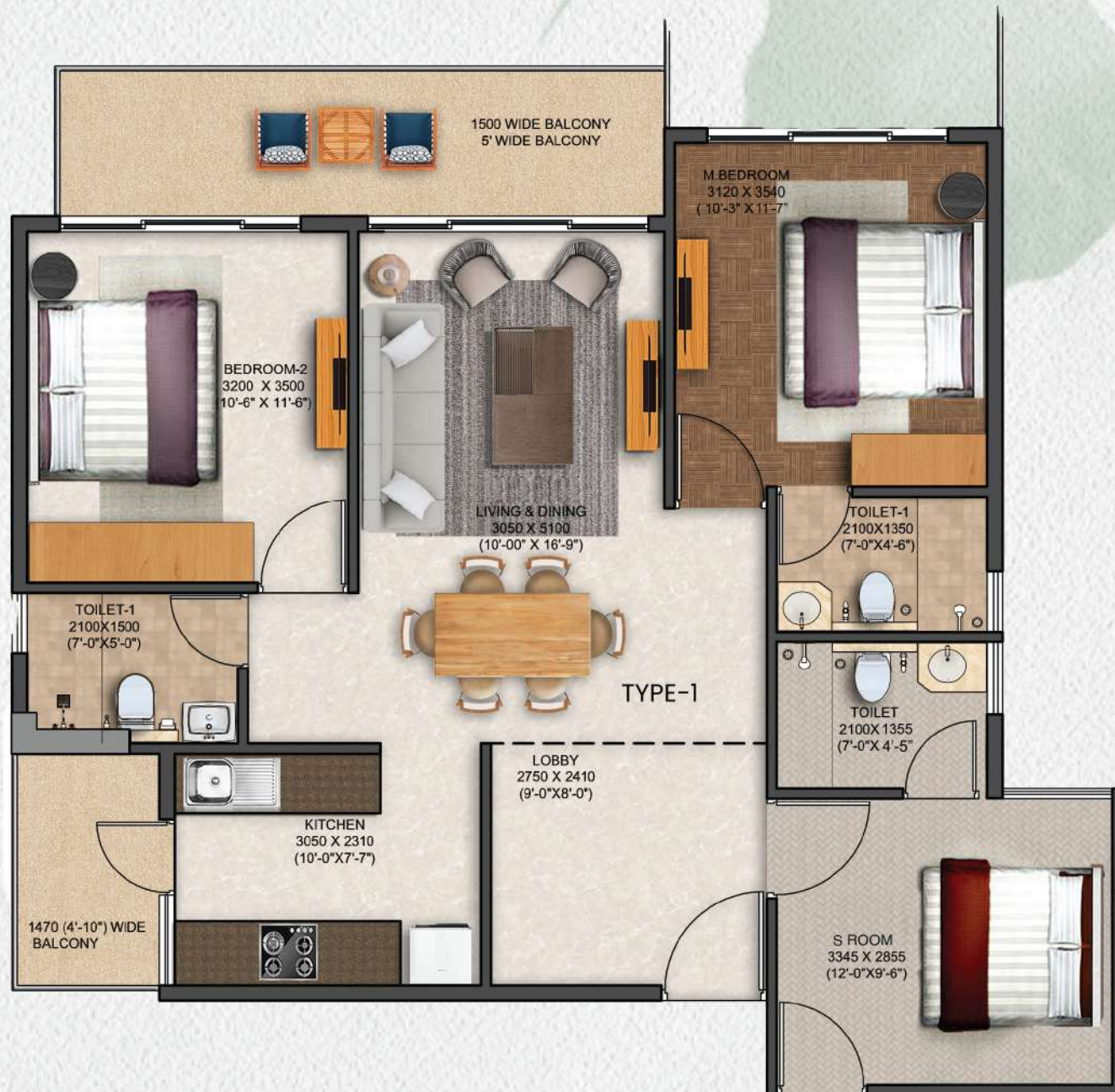


Floor Units & Plans



TYPE-A

Total Saleable Area-1969 Sq. Ft.



TYPE-B

Total Saleable Area-1559 Sq. Ft.



TYPE-C

Total Saleable Area-1969 Sq. Ft.



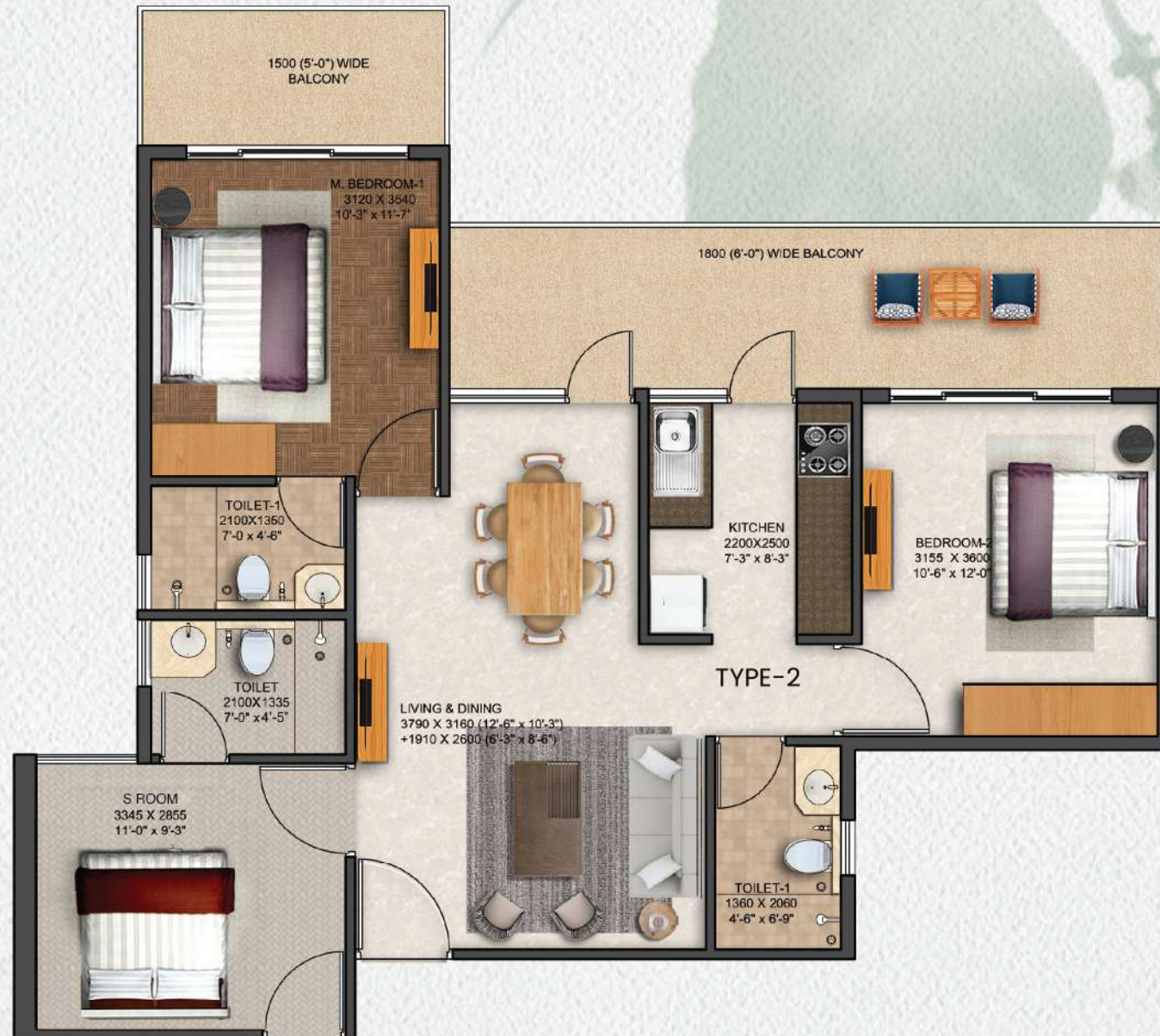
TYPE-D

Total Saleable Area-1781 Sq. Ft.



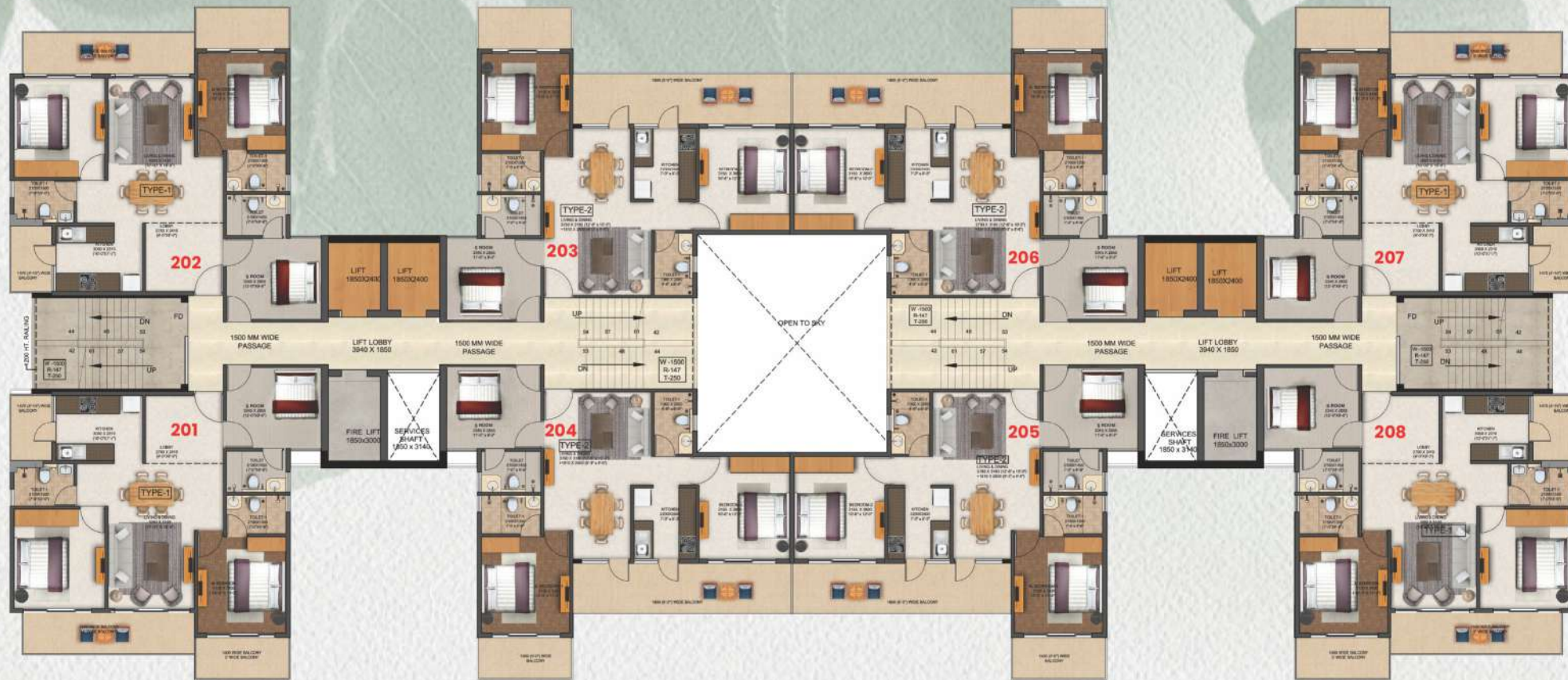
TYPE-E

Total Saleable Area-1781 Sq. Ft.



TYPE-F

Total Saleable Area-1410 Sq. Ft.



TYPICAL FLOOR PLAN






2 KARAM WIDE RASTA



Experience Life at *Silver Living*



 JMS Group, M3M Tee Point, 7th Floor, North Block, Sector 65, Gurugram, Haryana -122018

 +91 801 0000 777 |  www.jmsgroup.co.in

Disclaimer: *Promoter/Company has registered the Project- "JMS Group Silver Living" before HARERA, Gurugram and has obtained Registration No 39 of 2025 (RC/REP/HARERA/GGM/936/668/2025/39 dated 16/04/2025)

The pictures, images, perspective, features, figures, designs, specifications, information, content and other details herein are only indicative & Not a legal offering and the same are merely an indication for the purpose of depicting the appearance of the project "JMS Group Silver Living" of the Company/Promoter M/s JMS Infra Reality Pvt. Ltd. and is for general information only. The said information etc. provided herein is only for guidance and must not be relied on as such and shall not be construed as an advertisement for marketing purposes, offer for sale, assurance, invitation to offer, contract of any nature whatsoever or gives warranty of any kind, implied express or statutory and shall have no binding effect on the Company/Promoter. The said information etc. is subject to change without any notice or intimation whatsoever. Any decision of buying or investing in the project of Company/Promoter should be upon complete verification of all the details including type of inventories, amenities, area, specifications, services, approvals, policy under Retirement housing Policy dated 17-08-2021, permissions and other relevant terms independently with the authorized sales team of the company/promoter, at the company's/promoter's offices/site offices. Company/Promoter, their affiliates, nor any of their respective directors, officers, employees, agents or representatives shall not be liable for any loss, expenses or damage including, without limitation, indirect or consequential loss or damage or any expense, loss or damage etc. whatsoever arising from use, or loss of use, of data/information etc. and shall also not be liable for any expenses, loss or damages of any kind arising from the information etc. or any inaccuracy in the information etc.

The unit Type describe in the brochure as "Type A is Type 1P, Type B is Type 1, Type C is Type IAP, Type D is Type 2AP, Type E is Type 2P, Type F is Type 2". That mentioned herein * T&C Apply.