

Shapoorji Pallonji  
THE ODYSSEY

## A Legacy Built For The Future.

Crafted intricately with state-of-the-art technology, Shapoorji Pallonji's creations are no less than engineering marvels and landmark destinations.

And we've achieved this by making use of cutting-edge solutions for every project we've undertaken. This has helped shape our legacy of over 157 years, while maintaining a position of leadership in the industry.



ACTUAL IMAGE OF SP CENTRE, COLABA-MUMBAI

When classic luxury meets  
an innovative original.



Actual Image of The Imperial Towers

## Group's Global Footprints.

- Creating landmarks for over 157 years
- Global presence in more than 40 countries
- Over 200 mn. sq. ft. (18.5 mn. sq. m.) constructed in India
- Over 35,000 employee base





## SHAPOORJI PALLONJI'S FOOTPRINTS ACROSS SOUTH MUMBAI.

### FORT

- » Hindustan Co-op Life Insurance Building
- » 1919 Mint, Extension
- » 1930s NM Wadia Building
- » 1935 Bombay Mutual Life Insurance
- » 1937 New India Assurance Co
- » 1939 Reserve Bank of India (Old)
- » 1944 Bank of India
- » 1950 Mercantile Bank (Now HSBC)
- » 1968 Nanavati Mahalaya Building
- » 1970s United Bank of India
- » 1980 Reserve Bank of India (New)
- » 1986 Bombay Stock Exchange, Basement

### MALABAR HILL

- » 1887 Malabar Hill Water Reservoir
- » 1930 Sassoon Building
- » 1950 Mayfair Gardens
- » 1950 Rockside
- » 1951 Hill Park

### CHOWPATTY

- » 1900 Pavement

### GAMDEVI

- » 1998 Sterling Heritage
- » 2004 Sterling Tower

### MARINE LINES

- » 1957 St. Xavier's Boys Academy
- » 1958 Theosophy Hall

### TARDEO

- » 1920 Mumbai Central Railway Station
- » 2002 Crescent Heights
- » 2003 Crescent Tower 1
- » 2010 The Imperial

### CUMBALLA HILL

- » 1930 Everest House
- » 1938 Mafatlal (Now Sea Face) Park
- » 1940 Breach Candy Hospital & Nursing Home
- » 1950 Breach Candy Apartments
- » 1950 Breach Candy House
- » 1950 Kismet
- » 1971 Sterling Apartments
- » 1970 Bhulabhai Desai Auditorium
- » 1997 Great Eastern Royale
- » 2003 Janata Nagar Housing Society
- » 2007 Pallonji Shapoorji Home For Senior Citizens, Parsee General Hospital

### COLABA

- » 1928 Acropolis Patropolis and Heliopolis
- » 1930s – 1940s Lentinage
- » 1940s Southlands
- » 1931 Brady's Flats
- » 1939 Dhanraj Mahal
- » 1939-1945 Military Engineering Mess
- » 1952 Jehangir Art Gallery
- » 1962 Tata Institute of Fundamental Research & Homi Bhabha Auditorium
- » 1970 Taj Mahal Hotel Additional Floor
- » 1973 Taj Intercontinental Hotel
- » 1988 SP Centre
- » 2005 Taj Wellington Mews\*

### CUFFE PARADE

- » 1941 Windmere
- » 1978 World Trade Centre 1
- » 1986 Sea Wind

### MARINE DRIVE

- » 1939 Bombay Club (Later Natraj Hotel)
- » 2002 Wankhede Stadium Renovation\*

### BYCULLA

- » 1920s – 1930s Great Eastern Spinning Mills Extension
- » 1920s – 1930s Simplex Mills, Extension Work
- » 2010 Planet Godrej Tower 5\*

### CHURCHGATE

- » Royal Insurance Building
- » Central Agency Building
- » 1930 Ritz Hotel
- » 1935 Indian Merchants Chamber (Formerly Seth Lal Naranji Memorial Building)
- » 1937 Cricket Club of India Brabourne Stadium
- » 1943 Cement House
- » 1950 ICICI Building
- » 1950 Rusi Court
- » 1950 SNDT Women's University
- » 1950 Ambassador Hotel
- » 1954 Mafatlal House
- » 1956 Patkar Hall (In SNDT Women's University)
- » 1957 St Xavier's Institute of Education
- » 1970 New India Centre

### NARIMAN POINT

- » 1970 Mafatlal Centre
- » 1970s Union Bank Of India
- » 1972 State Bank Of India
- » 1973 Oberoi Towers
- » 1996 NCPA Apartments

# LOCATION MAP

## THE ODYSSEY

### Within 5 mins

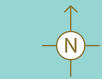
- Bhavans college
- Wilson College
- Chowpatty Beach
- Grant Road Station
- Bombay International School
- Edubridge International School
- Coastal Road

### Within 10 mins

- Sophia College
- Breach Candy Hospital
- Sri H N Reliance Hospital
- Hinduja College
- Saifee Hospital
- Hanging Garden
- Priyadarshini Park
- Charni Road Railway Station
- Marine Lines Railway Station
- Garware Club

### Within 15 mins

- Mumbai Central Railway Station
- Raj Bhavan
- Sri Walkeshwar Temple
- Churchgate Railway Station
- Nariman Point

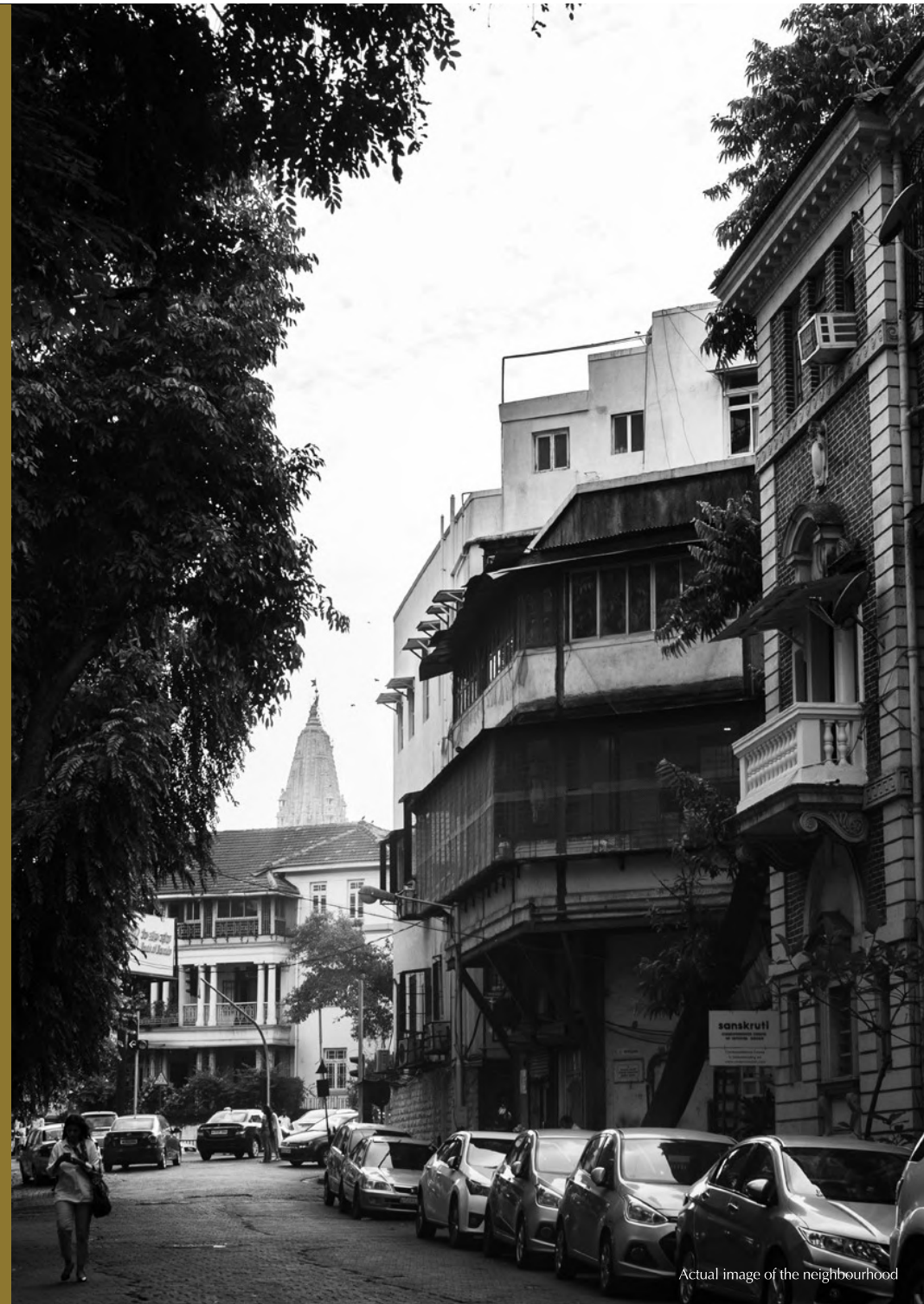


This map is not to scale, and the placement of the landmarks is indicative & for representation purposes only. Travel times mentioned are approximate and taken from a popular map application under normal traffic conditions.

## THE NEIGHBOURHOOD OF GAMDEVI

A quaint neighbourhood nestled in the heart of South Mumbai, is a trove of anecdotes and nostalgia. Once home to jewellers and masons of the old city, the area is also encrusted with historical tales and monuments of legacy and culture.

One would associate distance and seclusion with such a romanticised setting, but the area is only a few meters away from the bustling parts of South Mumbai.



Actual image of the neighbourhood



Actual image of the neighbourhood

With fascinating landmarks, like the last remaining gas lamp-post and the miniature model that inspired the design of the Gateway of India, the hidden quirks within the area continue to intrigue tourists and city-dwellers alike.

Mani Bhavan, now a heritage building, once served as the residence of Mahatma Gandhi during the early days of the non-violence movement.

Interestingly, the first full length Bollywood talkie called 'Alam Ara' was shot in the area, in the now defunct, Jyoti Studios. The famous Kennedy Bridge is also an integral part of Gamdevi. Saadat Hasan Manto, an Indo-Pakistani writer, refers to the bridge as Pawan Pul - The Bridge of Winds, in his book My Name is Radha.

This is perhaps in reference to the sea breeze that constantly embraces the area as it's just a few meters away from the Arabian Sea.



Actual image of the neighbourhood

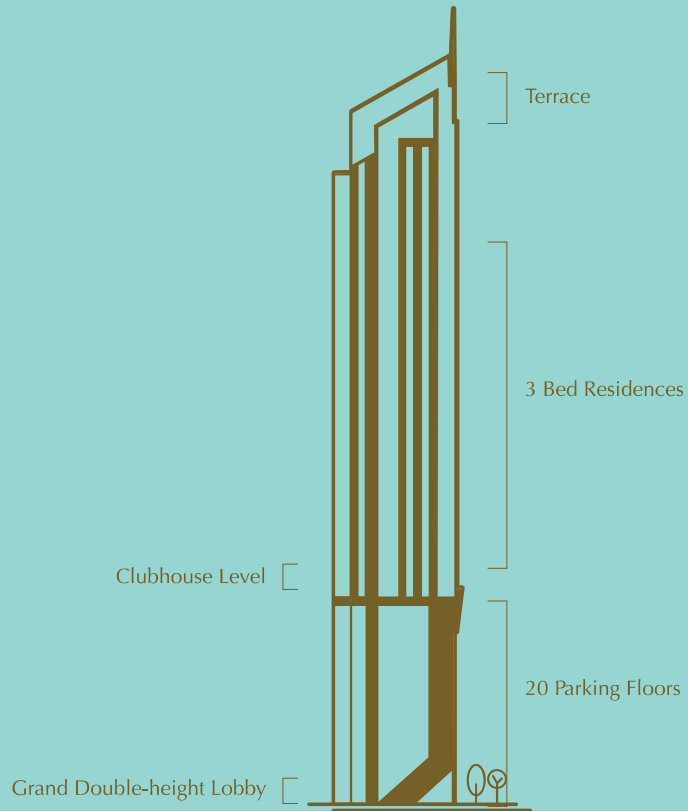
A marvel built by  
the true makers of South Mumbai

After building landmarks of excellence the world over, we at Shapoorji Pallonji are back home in South Mumbai. And we're back with a marvel that's close to our hearts. A home that mirrors the iconic soul of the city that never sleeps. Ultra luxurious residences with breathtaking views, Off Marine Drive, Mumbai.



Actual view from the tower. View may not be perpetual

## THE TOWER



The Odyssey is an exquisite world on its own. Where every resident will have more space and luxury to make the most out of life every day.

## KEY HIGHLIGHTS



Crafted by the true makers of SoBo



Spectacular Arabian Sea & Queen's Necklace views



Prime location just 200m from Marine Drive



Customizable layouts designed for your needs



Curated Amenities

## THE HOMES

A cherished landmark by the true makers of South Mumbai, The Odyssey is a home built for discerning families who will greet magnificent views of the Queen's Necklace every day. With ultra luxurious residences, it's more than just another glamorous address that adorns the charm of South Mumbai.



Artist impression



Actual view from the tower. View may not be perpetual

West View



Actual view from the tower. View may not be perpetual

North View



Actual view from the tower. View may not be perpetual.

South View

## THE AMENITIES

The Odyssey as an address is made to spoil you for choices. Not just with the views or its landmark location. Its state-of-the-art amenities make living here just as pleasing as the spirit of South Mumbai.



Gym



The Grand  
Double Height Lobby



The Grand  
Drop-off Plaza



Automated  
Car Parking



Visitors'  
Car Parking



Swimming  
Pool



Actual Image of Marine Drive



Address - Shapoorji Pallonji The Odyssey, Harishchandra Goregaonkar Road, Off Marine Drive, Gamdevi, Mumbai 400 007.

RERA- Shapoorji Pallonji The Odyssey 1 Project MahaRERA Registration NO P51900050998. Website - <https://maharera.maharashtra.gov.in/>

Disclaimer: The project development and marketing are managed by Shapoorji Pallonji Group company in collaboration with Floreat Investments Private Limited, the promoters of the project. The communication does not constitute an offer and/or contract of any type. Any prospective sale shall be governed by the terms and Agreement for Sale to be entered into between the parties. Before deciding on the purchase, customers are requested to independently either directly or through the customer's legal/finance advisors, thoroughly verify all details/documents pertaining to the project. Images used are for representative purposes only. All specifications of the project shall be as per the Agreement for Sale between the project promoter and the customer. The promoter shall undertake the development of the layout in a phased manner. Please contact us to know more. Other T&Cs apply. For more details, Visit - <https://shapoorjirealestate.com/>

